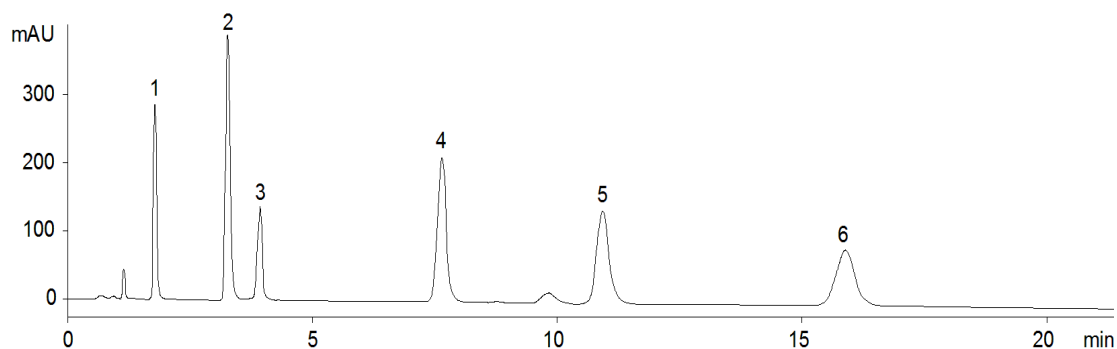


12903



**Column:** [Luna® 3 µm C18\(2\) 100 Å LC Column 75 x 4.6 mm](#)

**Part No:** [00C-4251-E0](#)

**Dimensions:** 75 x 4.6 mm ID

**Elution Type:** Isocratic

**Elution A:** 20 mM KH<sub>2</sub>PO<sub>4</sub>, pH 6.0

**Elution B:** Acetonitrile

**Gradient Profile:**

Step No.	Time (min)	Pct A	Pct B
1	0	70	30

**Flow Rate:** 0.75 mL/min

**Col. Temp:** ambient

**Detection:** UV-Vis Abs.-Variable Wave.(UV) @ 202 nm (22°C)

**Compounds:**

- 1- Tolmetin
- 2- Naproxen
- 3- Diflunisal
- 4- Fenoprofen
- 5- Indomethacin
- 6- Ibuprofen