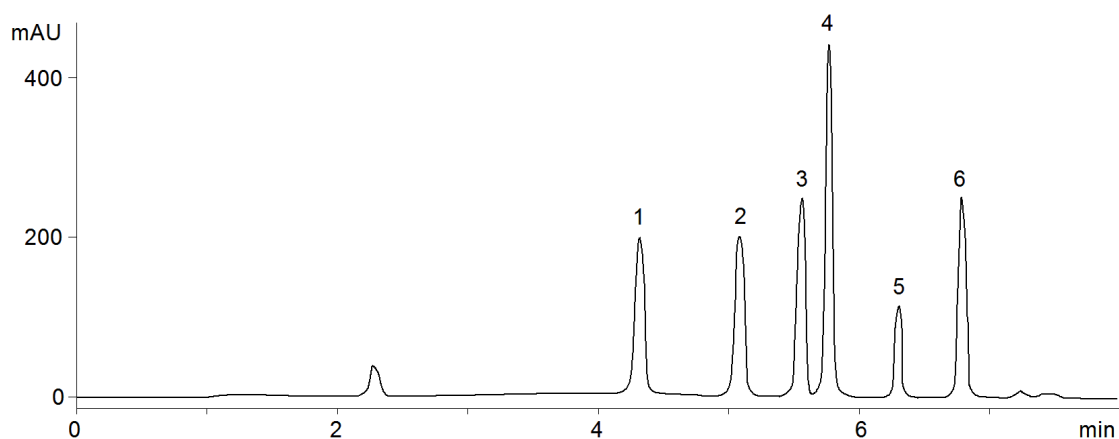


12923



Column: [Luna® 5 µm CN 100 Å LC Column 150 x 4.6 mm](#)

Part No: [00F-4255-E0](#)

Dimensions: 150 x 4.6 mm ID

Elution Type: Gradient

Elution A: Acetonitrile

Elution B: Water

Gradient Profile:

Step No.	Time (min)	Pct A	Pct B
2	5	65	35

Flow Rate: 1 mL/min

Col. Temp: ambient

Detection: UV-Vis Abs.-Variable Wave.(UV) @ 254 nm (22°C)

Compounds:

- 1- Tebuthiuron
- 2- Carbofuran
- 3- Carbaryl
- 4- Diuron
- 5- Captan
- 6- Barban