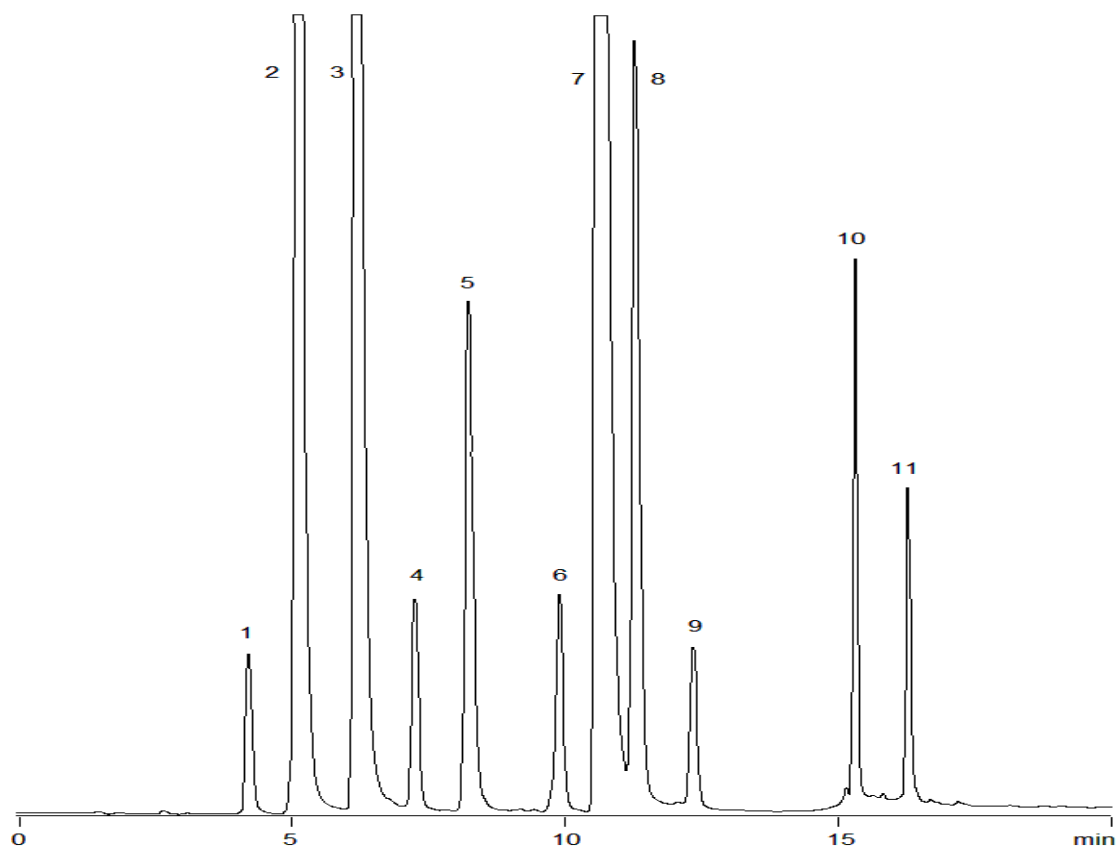


13243



Column: [EnviroSep-PP™ 5 µm PP , LC Column 125 x 4.6 mm, Ea](#)

Part No:[00E-3029-E0](#)

Dimensions:125 x 4.6 mm ID

Elution Type:Gradient

Elution A:Water w/ 1% acetic acid

Elution B:Methanol w/ 1% acetic acid

Gradient Profile:

Step No.	Time (min)	Pct A	Pct B
1	0	70	30
2	9.5	44	56
3	12	44	56
4	13	0	100

Flow Rate:1 mL/min

Col. Temp: 45 °C

Detection: UV-Vis Abs.-Variable Wave.(UV) @ 280 nm (22°C)

Compounds:

- 1- Phenol
- 2- 4-Nitrophenol
- 3- 2,4-Dinitrophenol
- 4- 2-Nitrophenol
- 5- o-Chlorophenol
- 6- 4,6-Dinitrophenol
- 7- 2,4-Dimethylphenol
- 8- 4-Chloro-3-methylphenol
- 9- 2,4-Dichlorophenol
- 10- 2,4,6-Trichlorophenol
- 11- Pentachlorophenol