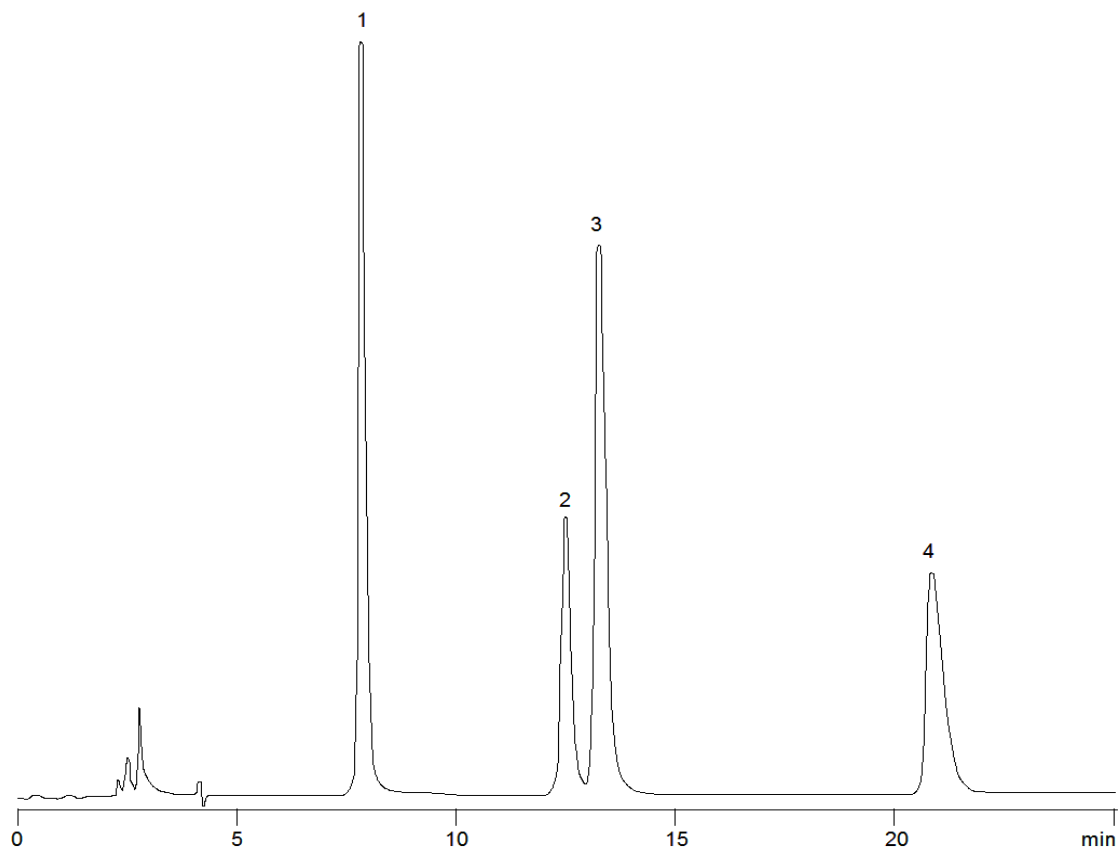


13357



Column: [Prodigy™ 5 µm ODS-3 100 Å LC Column 250 x 4.6 mm](#)

Part No: [00G-4097-E0](#)

Dimensions: 250 x 4.6 mm ID

Elution Type: Isocratic

Elution A: 87% 0.003 M Sodium pentane sulfonate (pH 2.0 with phosphoric acid) :
13% acetonitrile

Gradient Profile:

Step No.	Time (min)	Pct A
1	0	100

Flow Rate: 1 mL/min

Col. Temp: ambient

Detection: UV-Vis Abs.-Variable Wave.(UV) @ 285 nm (0°C)

Compounds:

- 1- Galanthamine
- 2- Codeine
- 3- Epigalanthamine
- 4- Narwedine