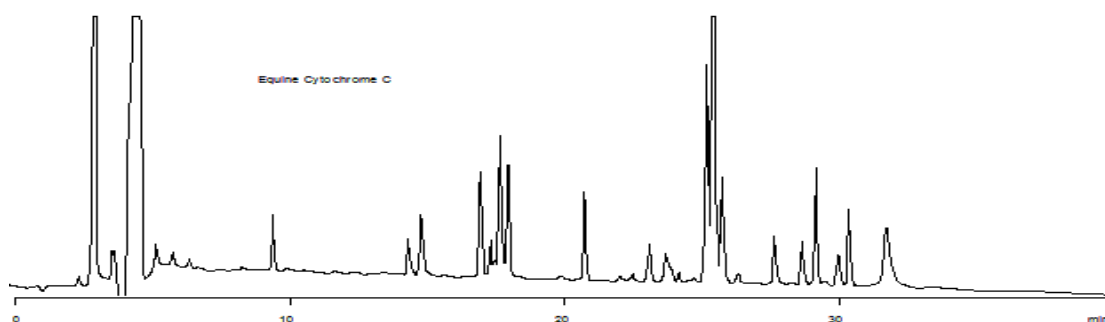
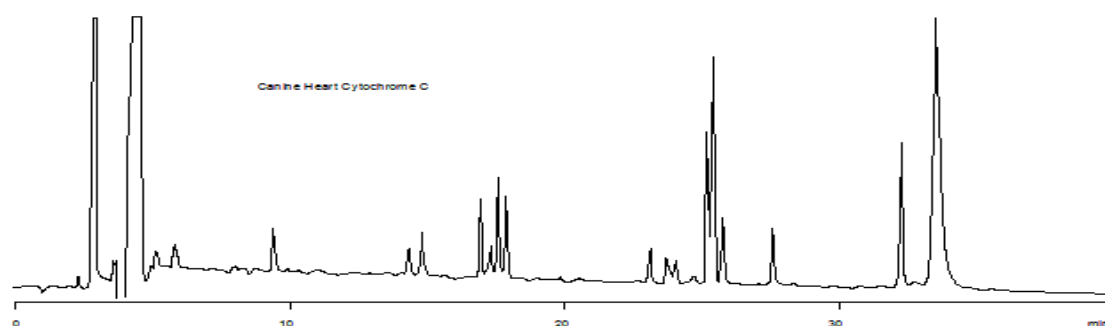
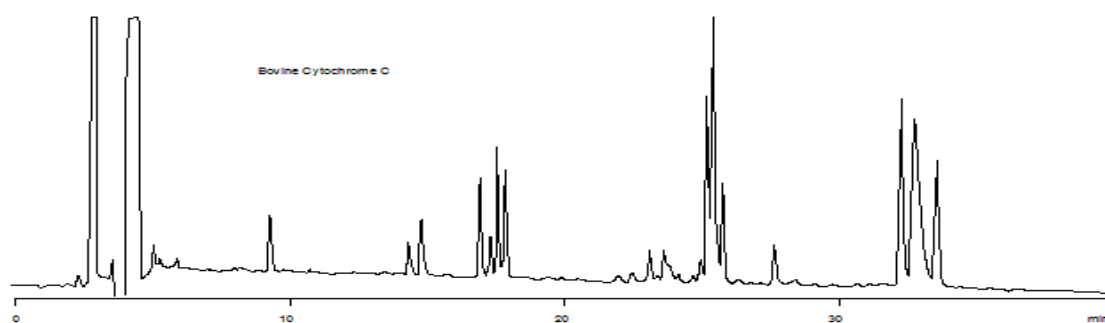


14682



**Column:** [Jupiter® 4 µm Proteo 90 Å LC Column 250 x 4.6 mm](#)

**Part No:** 00G-4396-E0

**Dimensions:** 250 x 4.6 mm ID

**Elution Type:** Gradient

**Elution A:** 0.12% TFA in water

**Elution B:** 0.10% TFA in MeCN

**Gradient Profile:**

Step No.	Time (min)	Pct A	Pct B
1	0	95	5
2	50	45	55
3	55	5	95
4	60	95	5
5	65	95	5

**Flow Rate:** 1 mL/min

**Col. Temp:** ambient

**Detection:** UV-Vis Abs.-Variable Wave.(UV) @ 210 nm (25°C)

**Compounds:**

- 1- Bovine Cytochrome c
- 2- Canine Heart Cytochrome c
- 3- Equine Cytochrome c