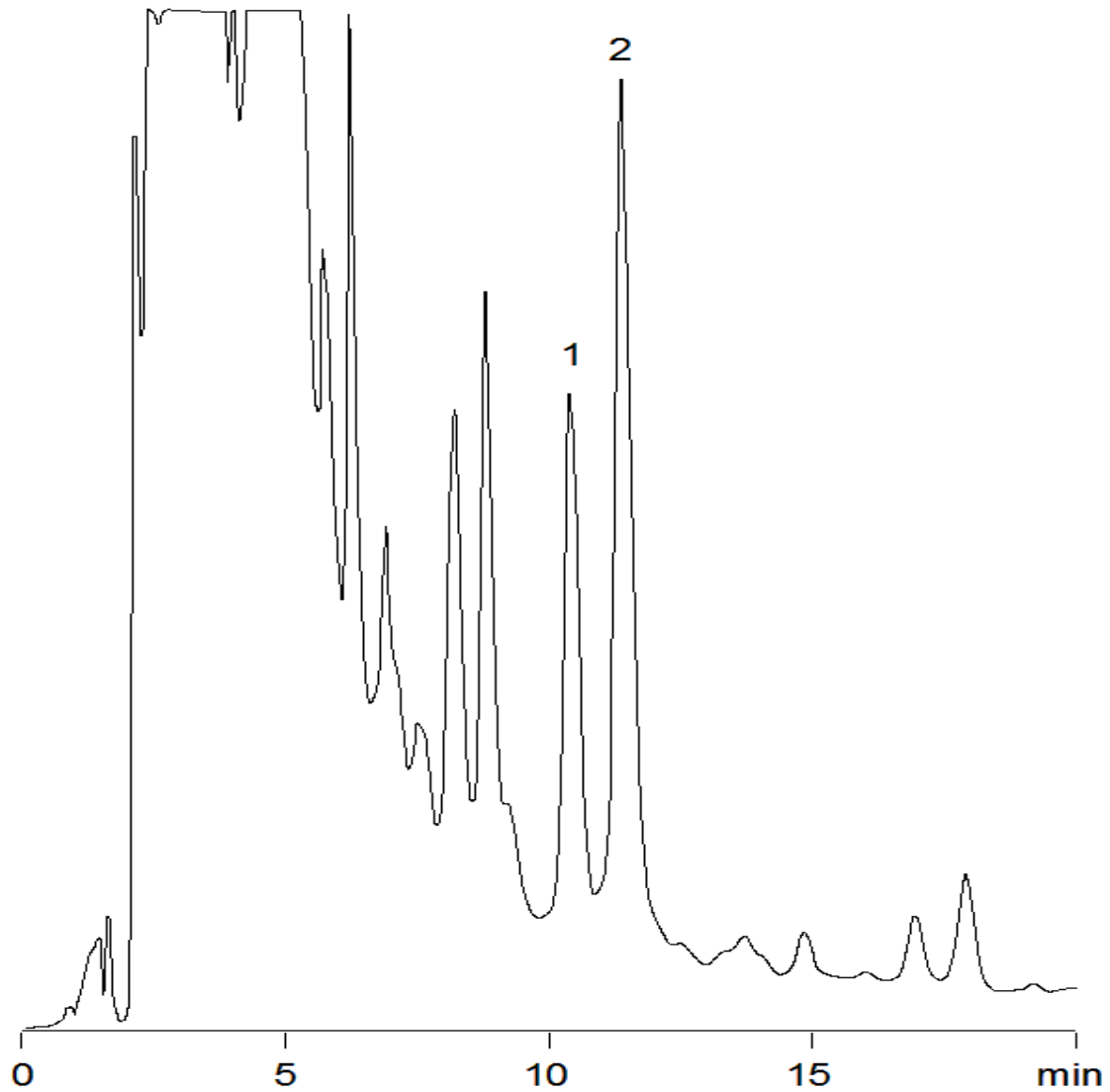


1481



Column: [Ultremex™ 5 μm C18 80 Å, LC Column 250 x 4.6 mm, Ea](#)

Part No: [00G-0048-E0](#)

Dimensions: 250 x 4.6 mm ID

Elution Type: Isocratic

Elution A: Acetonitrile

Elution B: Methanol

Elution C: Water

Gradient Profile:

Step No.	Time (min)	Pct A	Pct B	Pct C
1	0	80	10	10

Flow Rate: 1 mL/min

Col. Temp: ambient

Detection: Fluorescence (FLUOR) @ 365 nm (22°C)

Compounds:

- 1- Okadaic acid
- 2- Dinophysistoxin-2