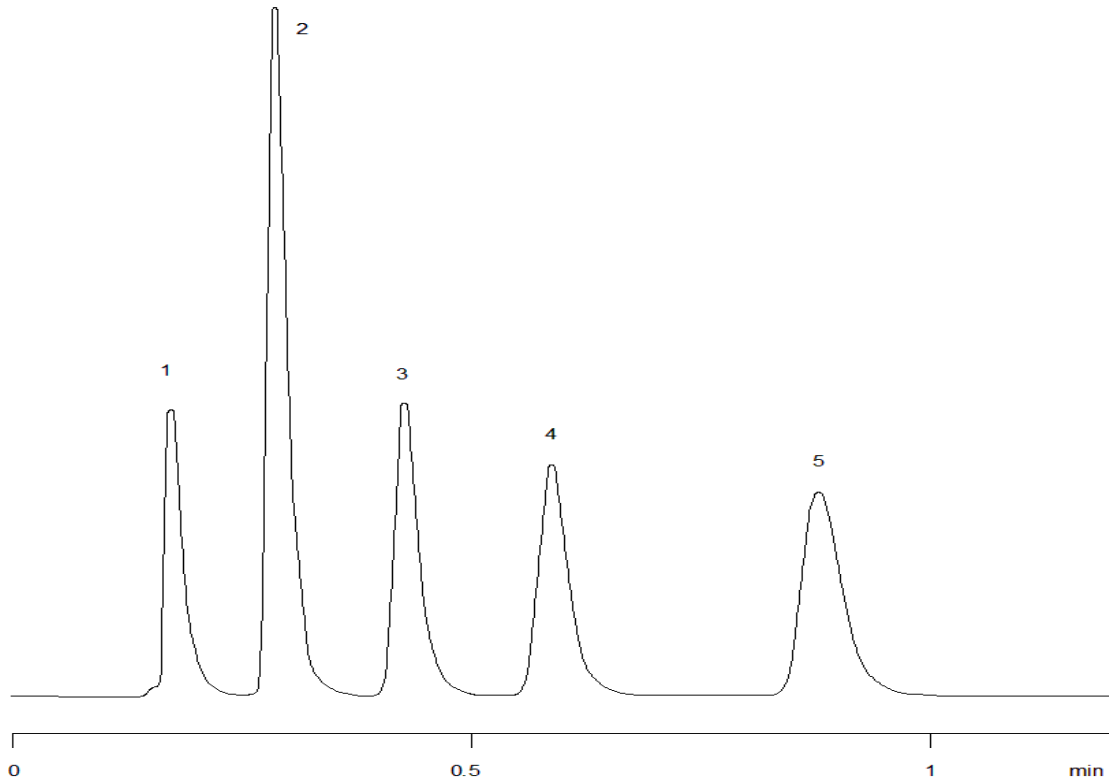


15475



Column: [Onyx™ Monolithic C18, LC Column 50 x 4.6 mm, Ea](#)

Part No: [CH0-7644](#)

Dimensions: 50 x 4.6 mm ID

Elution Type: Isocratic

Elution A: 0.1% TFA in Water

Elution B: Acetonitrile

Gradient Profile:

Step No.	Time (min)	Pct A	Pct B
1	0	80	20

Flow Rate: 5 mL/min

Col. Temp: ambient

Detection: UV-Vis Abs.-Variable Wave.(UV) @ 220 nm (22°C)

Compounds:

- 1- Atenolol
- 2- Pindolol
- 3- Metoprolol
- 4- Celiprolol
- 5- Bisoprolol