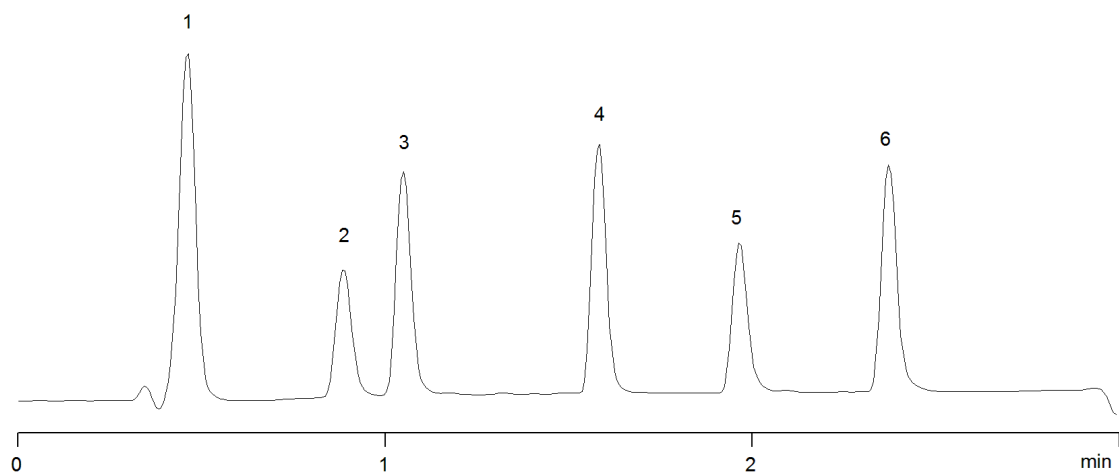


15504



Column: [Onyx™ Monolithic C18, LC Column 100 x 4.6 mm, Ea](#)
Part No: [CH0-7643](#)

Dimensions: 100 x 4.6 mm ID

Elution Type: Gradient

Elution A: 0.1% TFA in Water

Elution B: ACN

Gradient Profile:

Step No.	Time (min)	Pct A	Pct B
1	0	90	10
2	4	50	50

Flow Rate: 4 mL/min

Col. Temp: ambient

Detection: UV-Vis Abs.-Diode Array (PDA) @ 254 nm (22°C)

Compounds:

- 1- Sulfanilamide
- 2- Sulfadiazine
- 3- Sulfamerazine
- 4- Sulfamethoxazole
- 5- Sulfaquinoxaline
- 6- Sulfasalazine