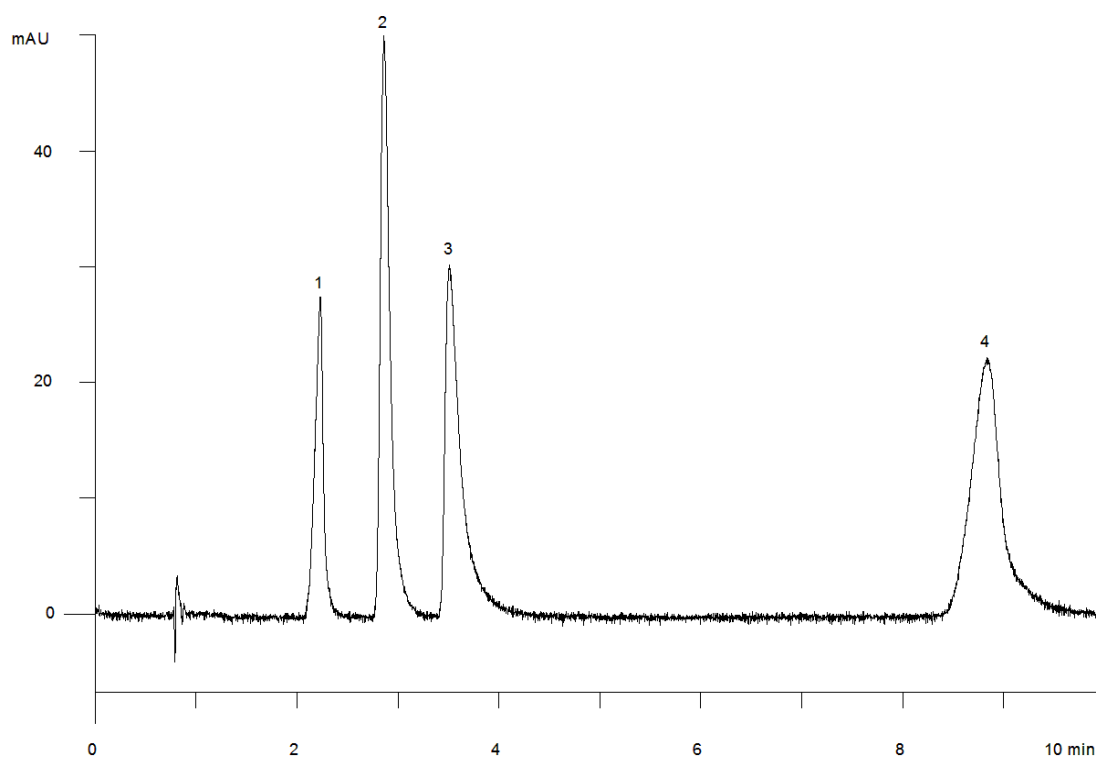


15520



Column: [Onyx Monolithic C18 Column 50 x 4.6 mm](#)

Part No: [CH0-7644](#)

Dimensions: 50 x 4.6 mm ID

Elution Type: Isocratic

Elution A: 10mM Potassium phosphate, pH 5.0

Elution B: Acetonitrile

Gradient Profile:

| Step No. | Time (min) | Pct A | Pct B |
|----------|------------|-------|-------|
| 1 | 0 | 97 | 3 |

Flow Rate: 1 mL/min

Col. Temp: ambient

Detection: UV-Vis Abs.-Variable Wave.(UV) @ 220 nm (22°C)

Compounds:

- 1- p-Hydroxybenzoic acid
- 2- Saccharin
- 3- Salicylic acid
- 4- Sorbic acid
- 5- p-Toluic acid