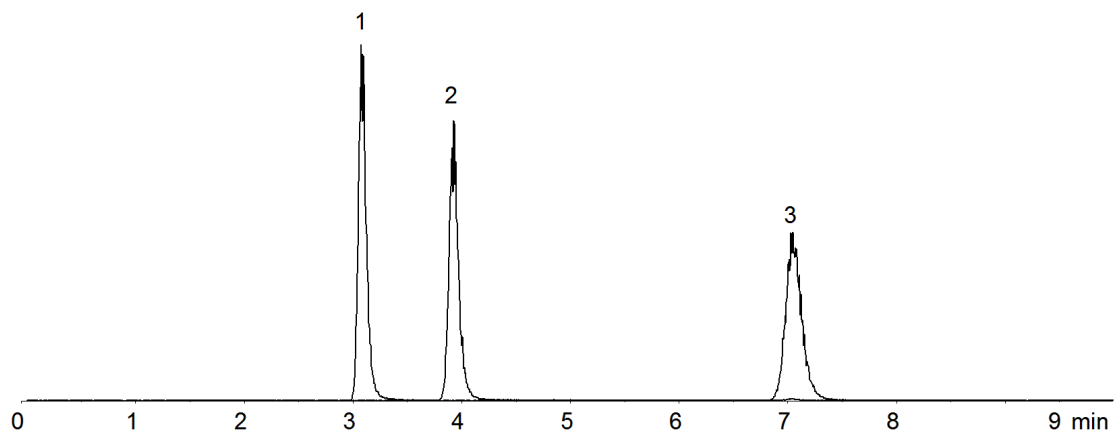


15530



**Column:** [Luna® 5 µm C18\(2\) 100 Å, LC Column 150 x 3 mm, Ea](#)

**Part No:** [00F-4252-Y0](#)

**Dimensions:** 150 x 3 mm ID

**Elution Type:** Isocratic

**Elution A:** 0.1% Formic acid in Water

**Elution B:** Acetonitrile

**Gradient Profile:**

Step No.	Time (min)	Pct A	Pct B
1	0	50	50

**Flow Rate:** 0.5 mL/min

**Col. Temp:** ambient

**Detection:** Mass Spectrometer (MS) @ amu (22°C)

**Compounds:**

- 1- beta-Zearalenol
- 2- alpha-Zearalenol
- 3- Zearalenone