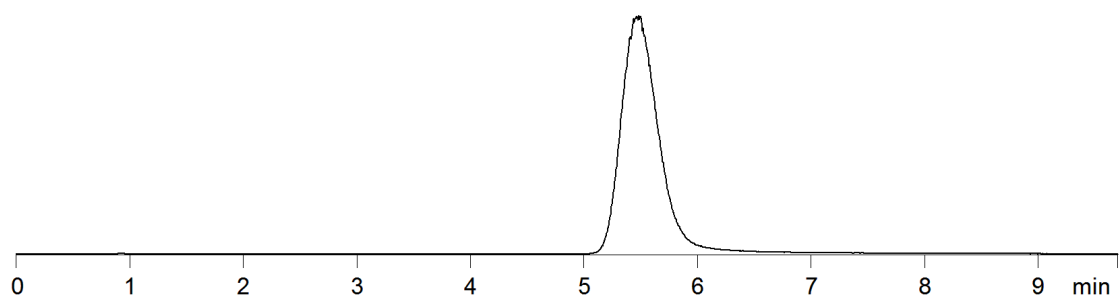


15537



Column: [Luna® 5 µm C18\(2\) 100 Å LC Column 150 x 3 mm](#)

Part No: [00F-4252-Y0](#)

Dimensions: 150 x 3 mm ID

Elution Type: Isocratic

Elution A: 0.1% Formic acid in Water

Elution B: Acetonitrile

Gradient Profile:

Step No.	Time (min)	Pct A	Pct B
1	0	50	50

Flow Rate: 0.5 mL/min

Col. Temp: ambient

Detection: Mass Spectrometer (MS) @ amu (22°C)

Compounds:

1- Citrinin