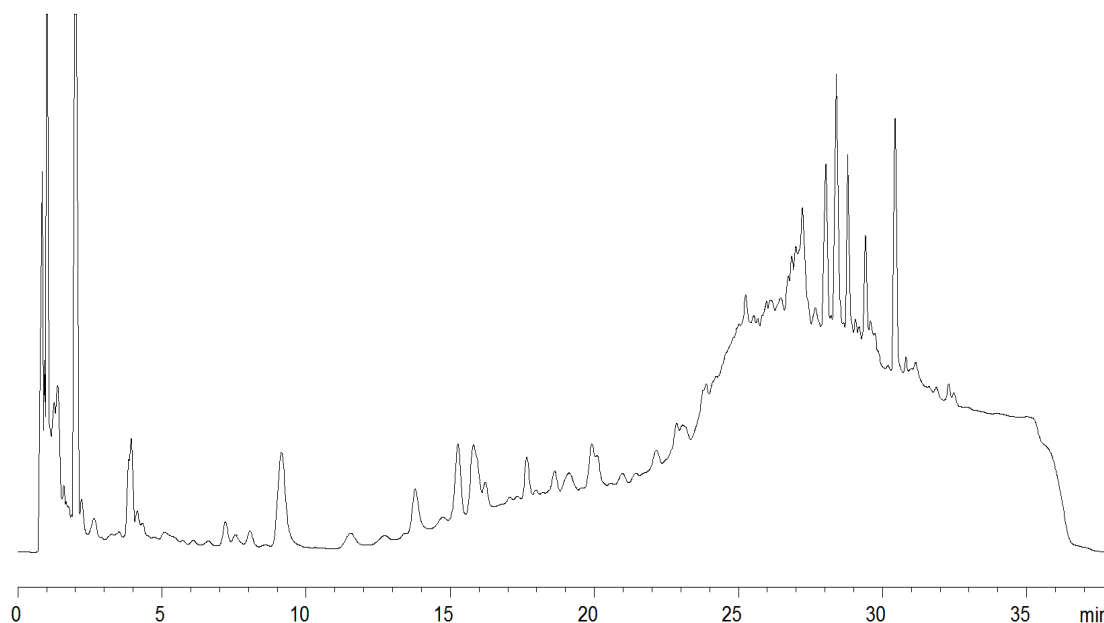


15590



**Column:** [Onyx Monolithic C18 Column 100 x 4.6 mm](#)

**Part No:** [CH0-7643](#)

**Dimensions:** 100 x 4.6 mm ID

**Elution Type:** Gradient

**Elution A:** 0.1% Phosphoric acid in Water

**Elution B:** 0.1% Phosphoric acid in Methanol

**Gradient Profile:**

Step No.	Time (min)	Pct A	Pct B
1	10	97	3
2	22	82	18
4	30	50	50
5	35	50	50

**Flow Rate:** 2 mL/min

**Col. Temp:** 30 °C

**Detection:** UV-Vis Abs.-Variable Wave.(UV) @ 254 nm (22°C)

**Compounds:**

1- Red wine