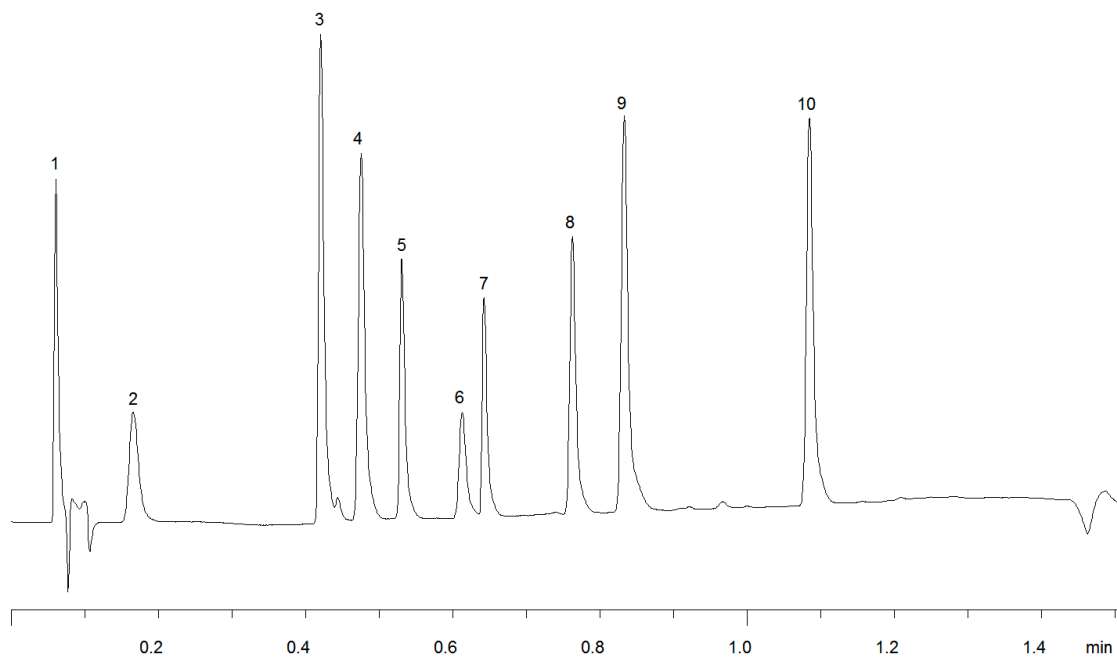


15623



**Column:** [Luna® 3 µm C18\(2\) 100 Å LC Column 20 x 4 mm, Mercury](#)

**Part No:** [00M-4251-D0-CE](#)

**Dimensions:** 20 x 4 mm ID

**Elution Type:** Gradient

**Elution A:**

**Gradient Profile:**

Step No.	Time (min)	Pct A
1	0	95
2	1	5
3	1.2	5
4	1.21	95
5	1.5	95

**Flow Rate:** 2.5 mL/min

**Col. Temp:** ambient

**Detection:** UV-Vis Abs.-Variable Wave.(UV) @ 254 nm (25°C)

**Compounds:**

- 1- Pyridine
- 2- Sulfanilamide
- 3- Quinidine
- 4- Sulfathiazole
- 5- Triprolidine
- 6- Phenol
- 7- Nortriptyline
- 8- 3-Methyl-4-nitrobenzoic acid
- 9- 5-Methyl-salicylaldehyde
- 10- Hexaphenone