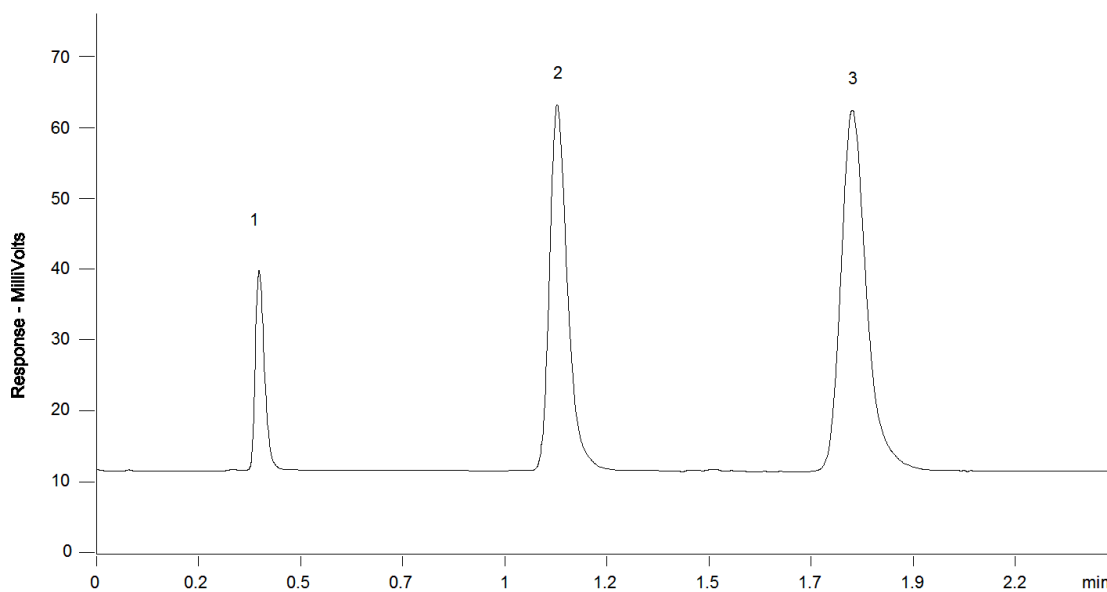


15640



Column: [Onyx Monolithic C18 Column 50 x 4.6 mm](#)

Part No: [CH0-7644](#)

Dimensions: 50 x 4.6 mm ID

Elution Type: Isocratic

Elution A: Acetonitrile

Elution B: Water

Gradient Profile:

Step No.	Time (min)	Pct A	Pct B
1	0	60	40

Flow Rate: 2 mL/min

Col. Temp: ambient

Detection: UV-Vis Abs.-Variable Wave.(UV) @ 254 nm (22°C)

Compounds:

- 1- Thiourea
- 2- Progesterone
- 3- Anthracene