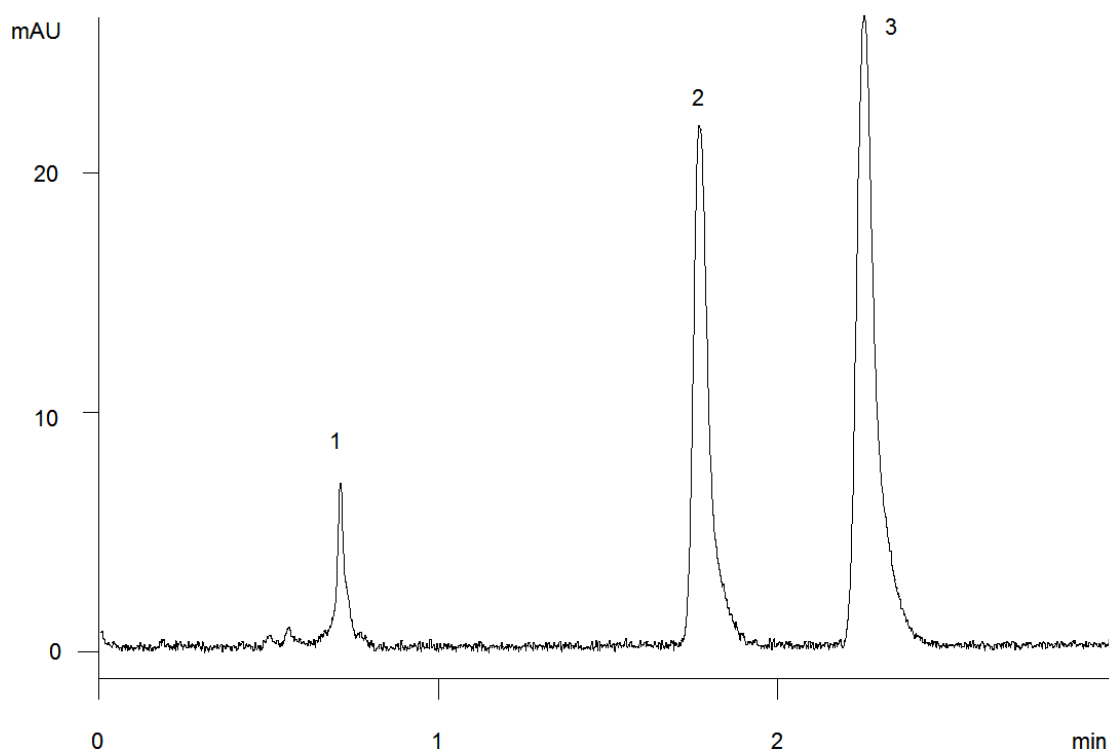


15641



Column: [Onyx™ Monolithic C8, LC Column 100 x 4.6 mm, Ea](#)

Part No: [CH0-7647](#)

Dimensions: 100 x 4.6 mm ID

Elution Type: Isocratic

Elution A: Water

Elution B: Acetonitrile

Gradient Profile:

Step No.	Time (min)	Pct A	Pct B
1	0	40	60

Flow Rate: 2 mL/min

Col. Temp: ambient

Detection: UV-Vis Abs.-Variable Wave.(UV) @ 254 nm (22°C)

Compounds:

- 1- Thiourea
- 2- Progesterone
- 3- Anthracene