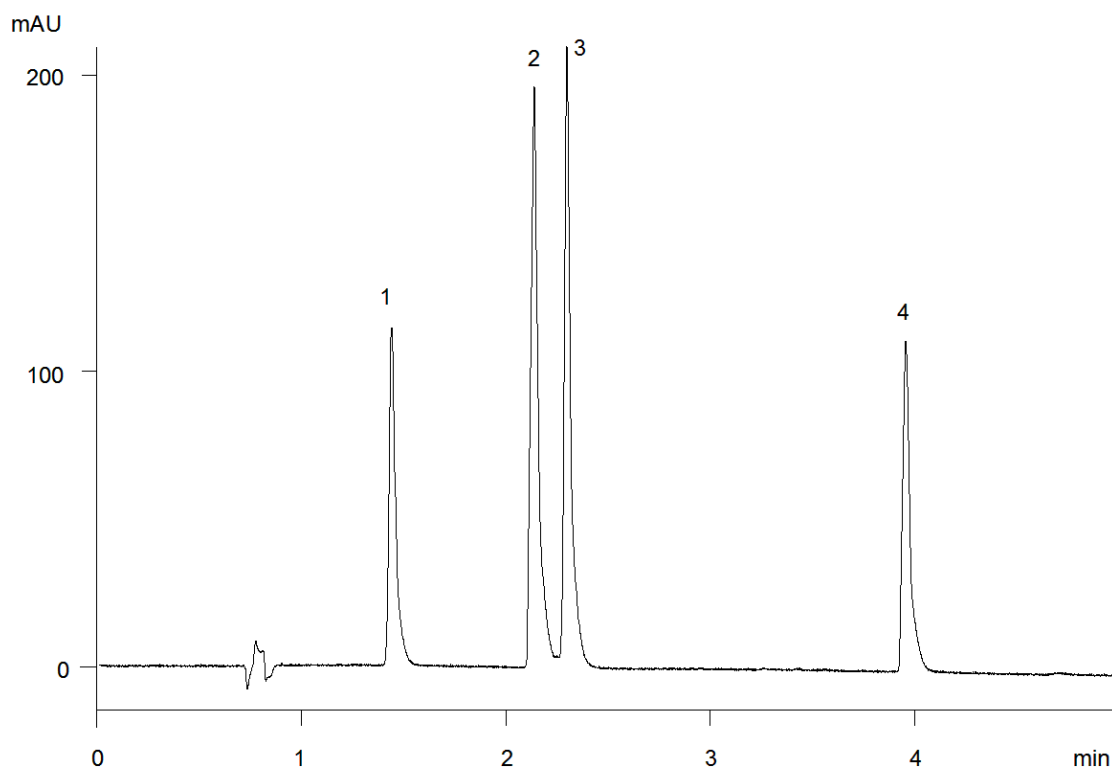


15647



Column: [Onyx™ Monolithic C8, LC Column 100 x 4.6 mm, Ea](#)

Part No: [CH0-7647](#)

Dimensions: 100 x 4.6 mm ID

Elution Type: Gradient

Elution A: 0.1% Phosphoric acid

Elution B: Acetonitrile

Gradient Profile:

Step No.	Time (min)	Pct A	Pct B
1	0	70	30
2	4	20	80

Flow Rate: 2 mL/min

Col. Temp: ambient

Detection: UV-Vis Abs.-Variable Wave.(UV) @ 254 nm (22°C)

Compounds:

- 1- Phenol
- 2- 2,4-Dinitrophenol
- 3- 3,4-Dinitrophenol
- 4- Pentachlorophenol