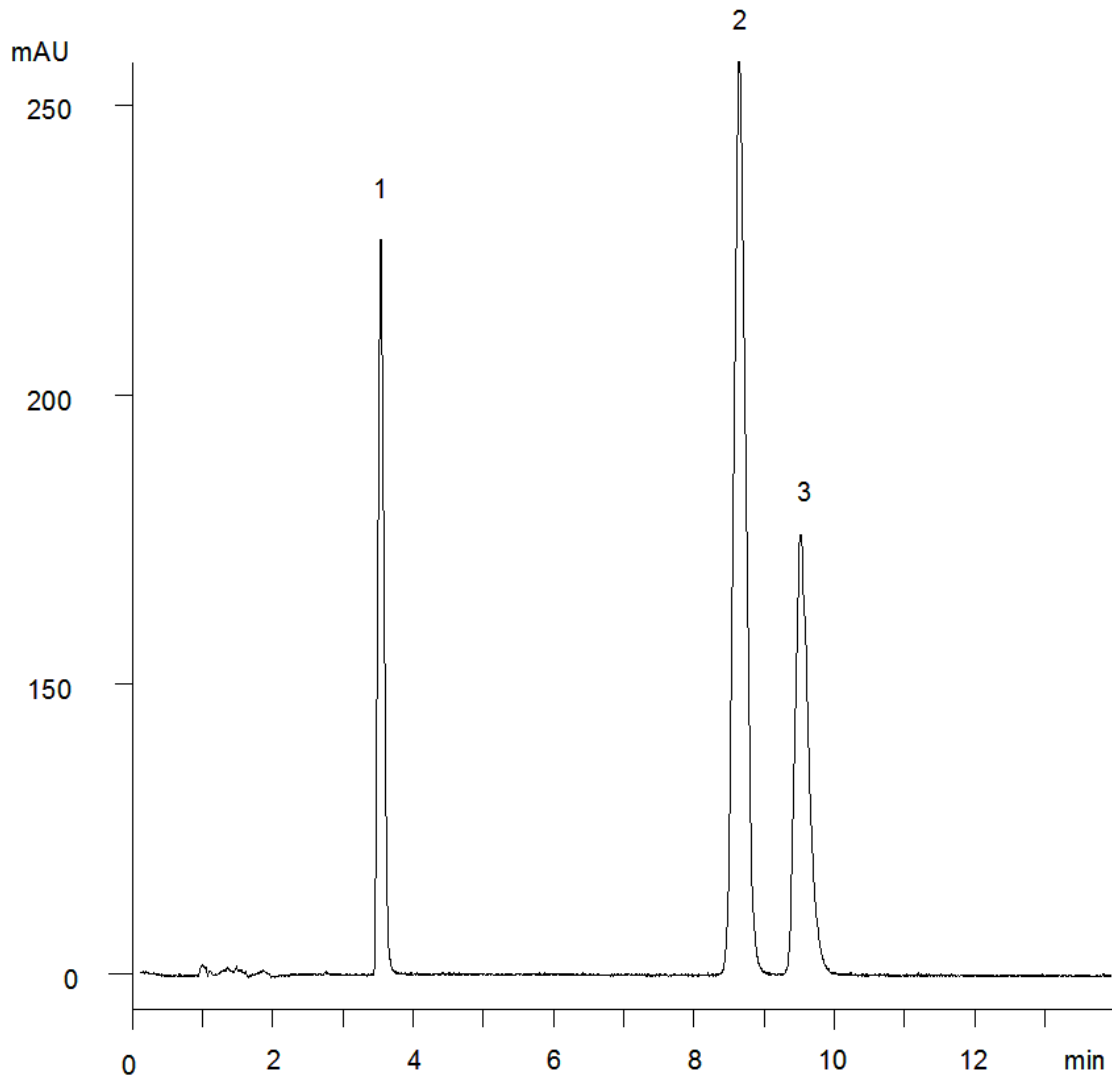


15671



Column: [Luna® 5 µm C18\(2\) 100 Å LC Column 150 x 4.6 mm](#)

Part No: [00F-4252-E0](#)

Dimensions: 150 x 4.6 mm ID

Elution Type: Isocratic

Elution A: 10mM NH₄HCO₃, pH 10.5

Elution B: Acetonitrile

Gradient Profile:

Step No.	Time (min)	Pct A	Pct B
1	0	50	50

Flow Rate: 1 mL/min

Col. Temp: 25 °C

Detection: UV-Vis Abs.-Variable Wave.(UV) @ 210 nm (25°C)

Compounds:

- 1- Procaine
- 2- Lidocaine
- 3- Tetracaine