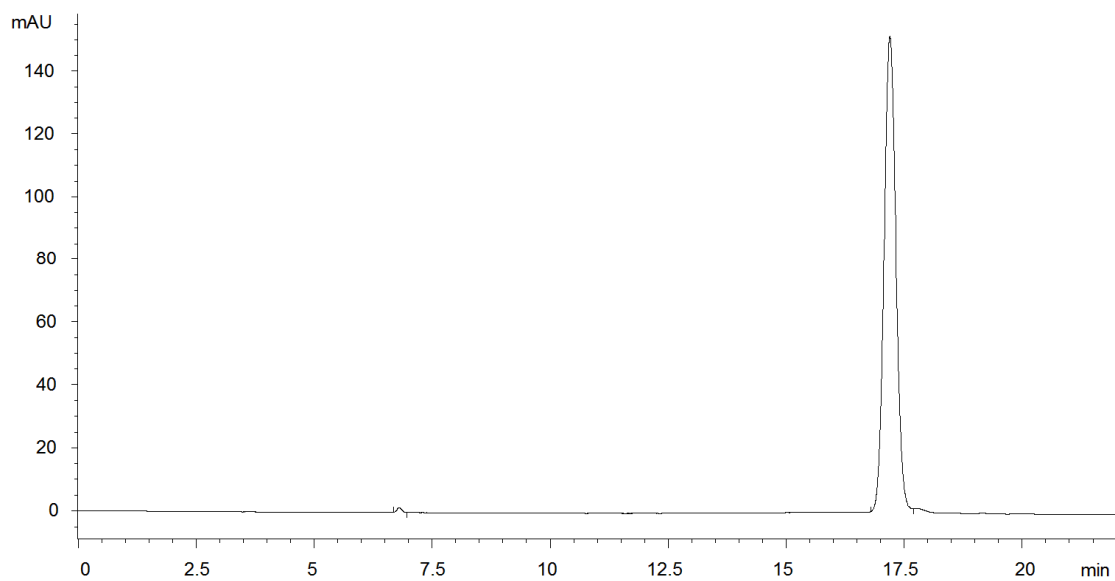


15713



Column: [Rezex™ 8 µm ROA-Organic Acid H+ \(8%\) LC Column 30 x 4.6 mm](#)

Part No: [00A-0138-E0](#)

Dimensions: 30 x 4.6 mm ID

Elution Type: Isocratic

Elution A: 0.005N H₂SO₄ in water

Gradient Profile:

Step No.	Time (min)	Pct A
1	0	100

Flow Rate: 0.6 mL/min

Col. Temp: ambient

Detection: UV-Vis Abs.-Variable Wave.(UV) @ 210 nm (22°C)

Compounds:

1- Ribavirin