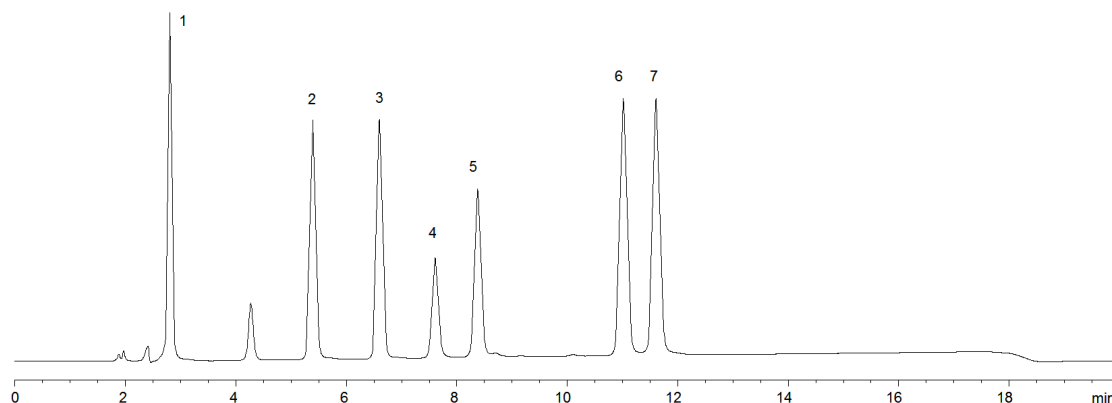


15742



Column: [Curosil-PFp 5 µm LC Column 150 x 4.6 mm](#)

Part No: [00F-4012-E0](#)

Dimensions: 150 x 4.6 mm ID

Elution Type: Gradient

Elution A: 20mM Ammonium formate, pH 3.5

Elution B: Methanol

Gradient Profile:

Step No.	Time (min)	Pct A	Pct B
1	0	97	3
2	10	65	35

Flow Rate: 1 mL/min

Col. Temp: ambient

Detection: UV-Vis Abs.-Variable Wave.(UV) @ 260 nm (22°C)

Compounds:

- 1- Norepinephrine
- 2- Epinephrine
- 3- Normetanephrine
- 4- Dopamine
- 5- Deoxyepinephrine
- 6- 3-Methoxytyramine
- 7- Serotonin