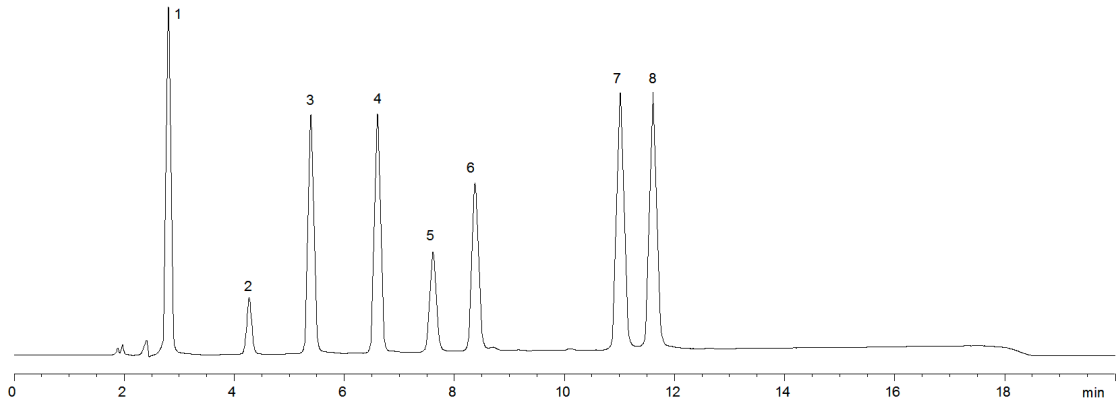


15751



Column: [Curosil-PFp 5 \$\mu\$ m LC Column 150 x 4.6 mm](#)

Part No: [00F-4012-E0](#)

Dimensions: 150 x 4.6 mm ID

Elution Type: Isocratic

Elution A: 0.1% Formic acid in Water

Elution B: Acetonitrile

Gradient Profile:

Step No.	Time (min)	Pct A	Pct B
1	0	85	15

Flow Rate: 1 mL/min

Col. Temp: ambient

Detection: UV-Vis Abs.-Variable Wave.(UV) @ 280 nm (22°C)

Compounds:

- 1- Gallic acid
- 2- Epigallocatechin
- 3- Catechin
- 4- Epicatechin
- 5- Epigallocatechin gallate
- 6- Gallocatechin gallate
- 7- Epicatechin gallate
- 8- Catechin gallate