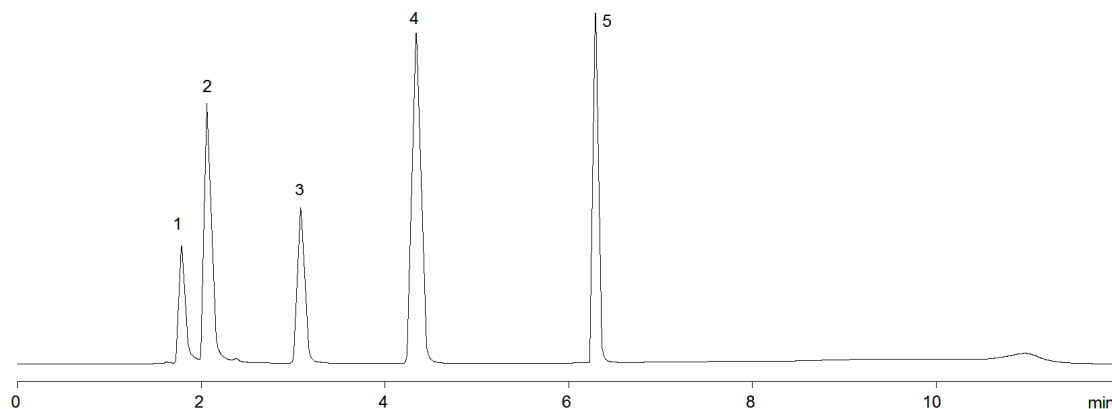


15760



Column: [Luna® 5 µm C18\(2\) 100 Å LC Column 150 x 4.6 mm](#)

Part No: [00F-4252-E0](#)

Dimensions: 150 x 4.6 mm ID

Elution Type: Gradient

Elution A: 20mM Ammonium acetate, pH 4.5

Elution B: Acetonitrile

Gradient Profile:

Step No.	Time (min)	Pct A	Pct B
1	0	97	3
2	10	60	40

Flow Rate: 1 mL/min

Col. Temp: ambient

Detection: UV-Vis Abs.-Variable Wave.(UV) @ 260 nm (22°C)

Compounds:

- 1- TTP
- 2- TDP
- 3- TMP
- 4- Thymine
- 5- Thymidine