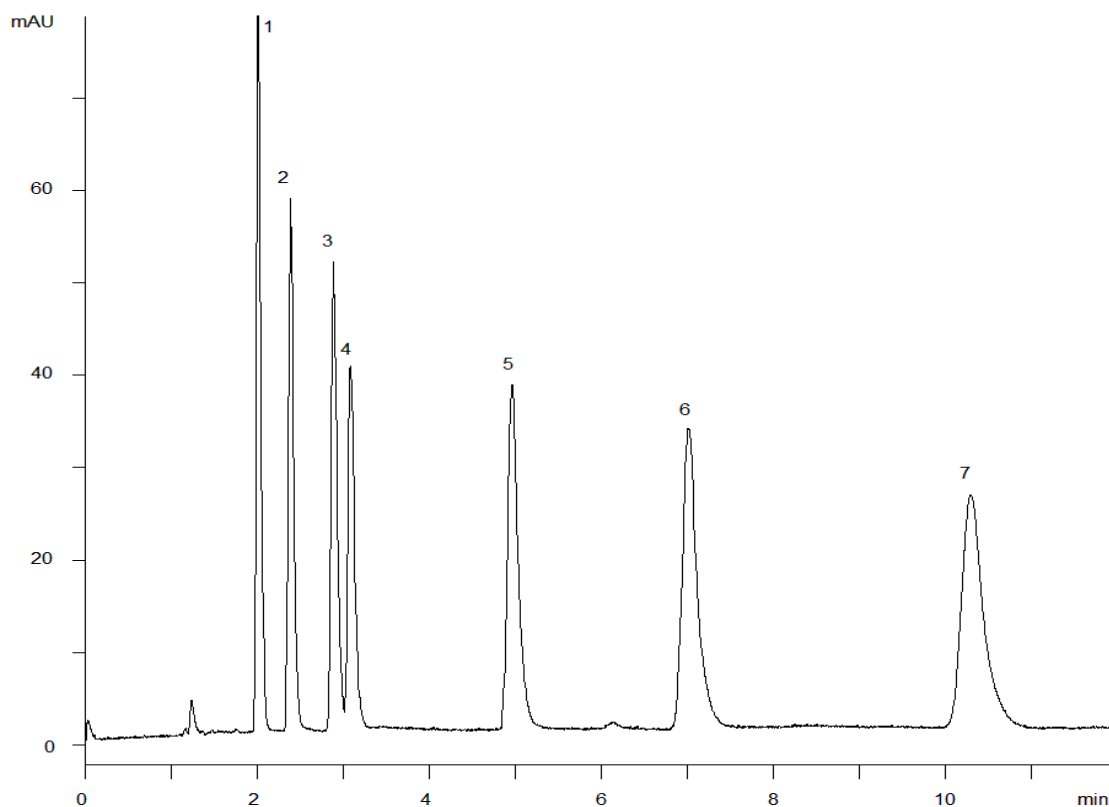


15771



Column: [Onyx Monolithic C18 Column 100 x 4.6 mm](#)

Part No: [CH0-7643](#)

Dimensions: 100 x 4.6 mm ID

Elution Type: Isocratic

Elution A: Acetonitrile

Elution B: Water

Gradient Profile:

Step No.	Time (min)	Pct A	Pct B
1	0	60	40

Flow Rate: 1 mL/min

Col. Temp: ambient

Detection: UV-Vis Abs.-Variable Wave.(UV) @ 210 nm (22°C)

Compounds:

- 1- Acetophenone
- 2- Propiophenone
- 3- Butyrophenone
- 4- Benzophenone
- 5- Hexanophenone
- 6- Heptanophenone
- 7- Octanophenone