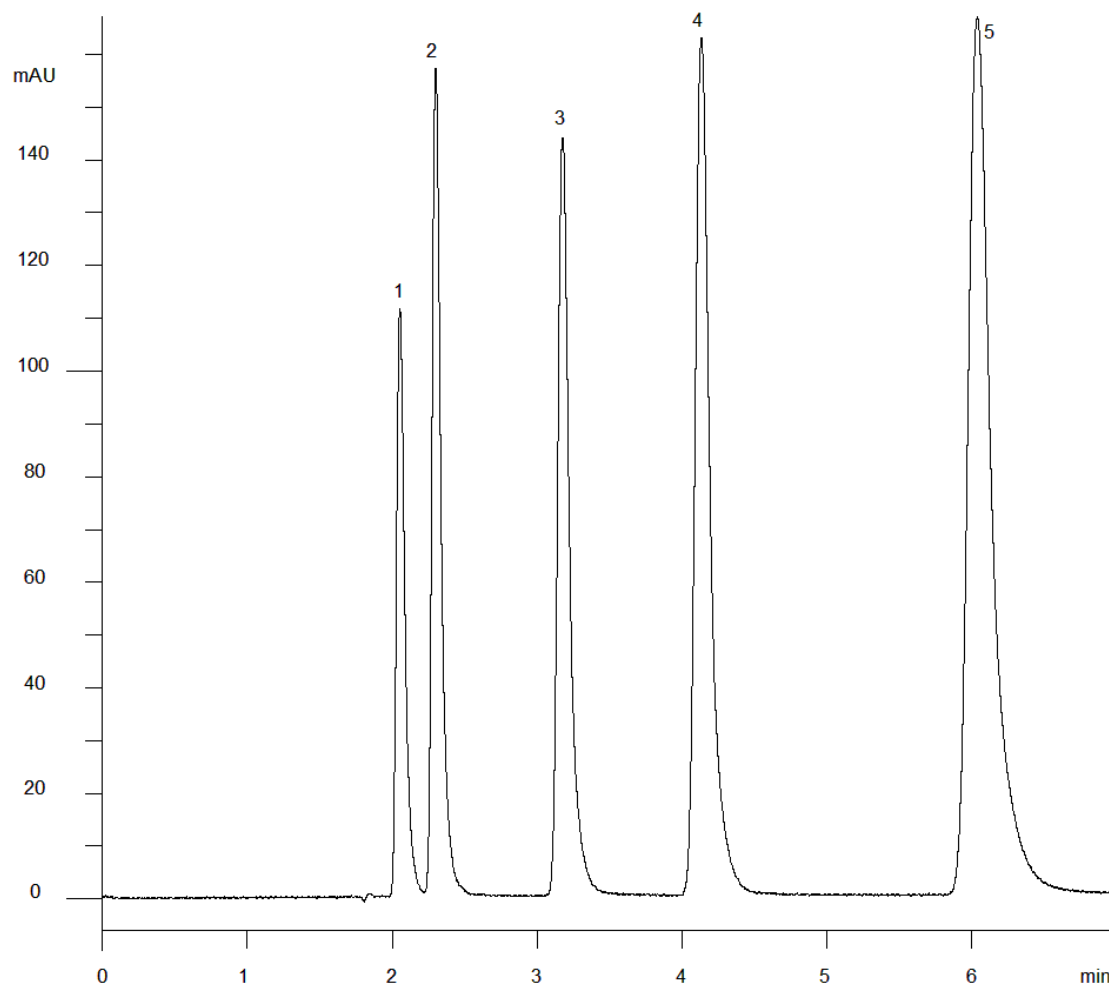


15774



Column: [Onyx Monolithic C18 Column 100 x 4.6 mm](#)

Part No: [CH0-7643](#)

Dimensions: 100 x 4.6 mm ID

Elution Type: Isocratic

Elution A: Methanol

Elution B: 20mM Ammonium acetate, pH 4.5

Gradient Profile:

Step No.	Time (min)	Pct A	Pct B
1	0	8	92

Flow Rate: 1 mL/min

Col. Temp: ambient

Detection: UV-Vis Abs.-Variable Wave.(UV) @ 260 nm (22°C)

Compounds:

- 1- Cytosine
- 2- Uracil
- 3- Guanine
- 4- Thymine
- 5- Adenine