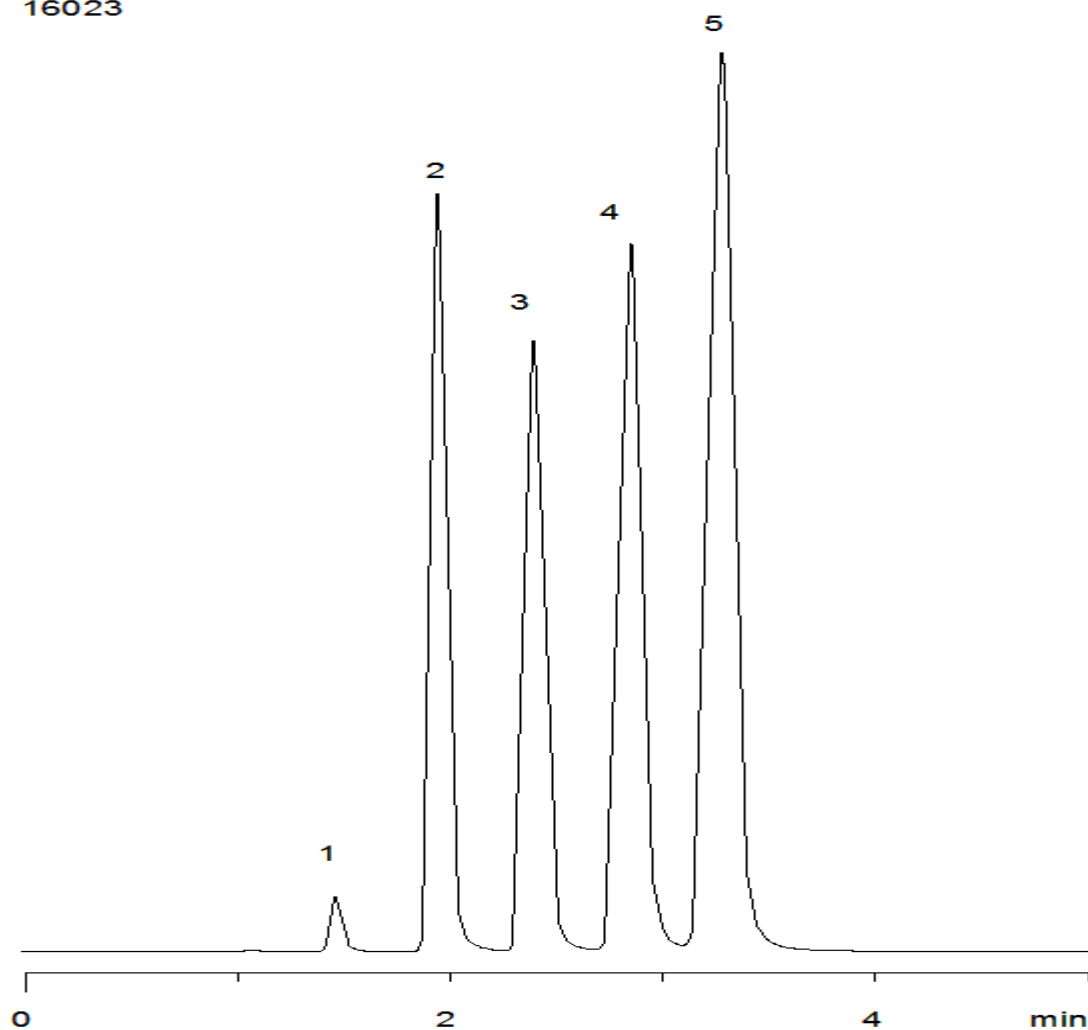


16023



Column: [Onyx Monolithic C18 Column 100 x 3.0 mm](#)

Part No: [CH0-8158](#)

Dimensions: 100 x 3 mm ID

Elution Type: Isocratic

Elution A: Water

Elution B: Acetonitrile

Gradient Profile:

Step No.	Time (min)	Pct A	Pct B
1	0	35	65

Flow Rate: 0.4 mL/min

Col. Temp: ambient

Detection: UV-Vis Abs.-Variable Wave.(UV) @ 254 nm (22°C)

Compounds:

- 1- Uracil
- 2- Acetophenone
- 3- Benzene
- 4- Toluene
- 5- Naphthalene