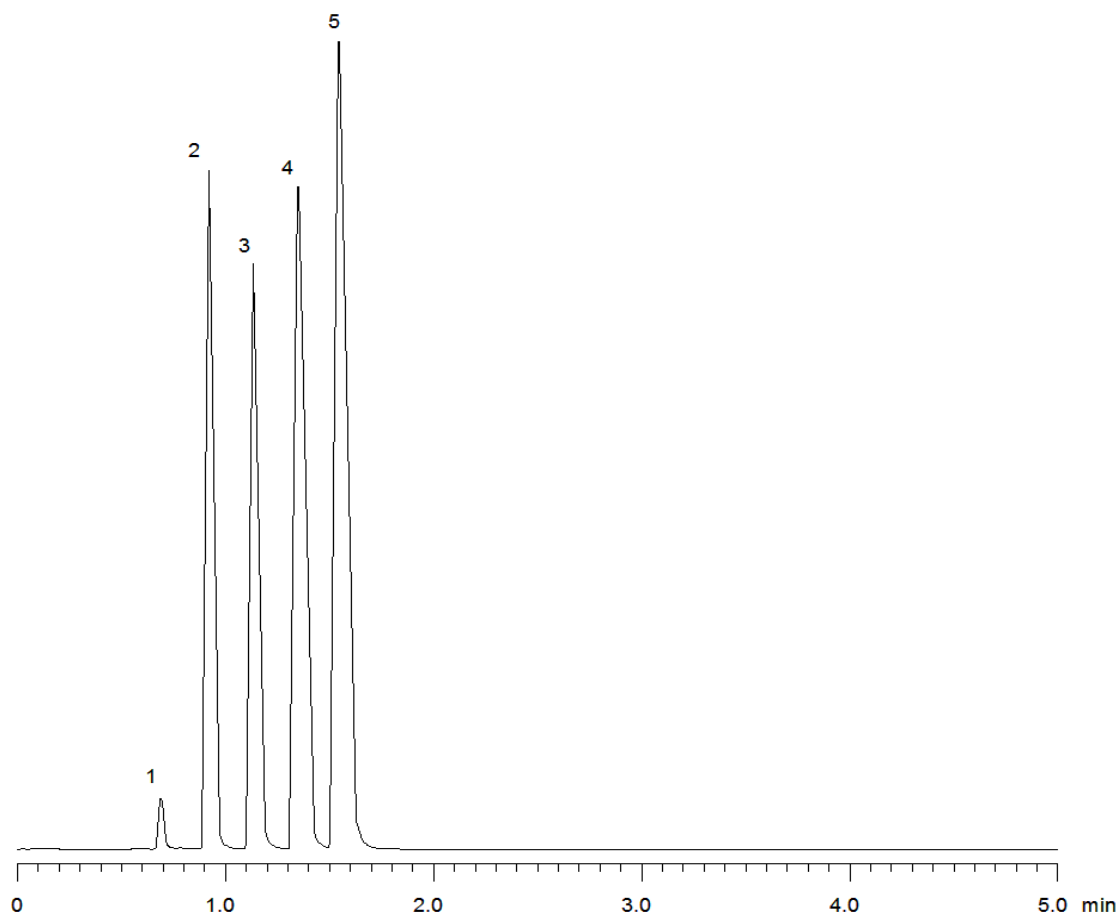


16027



**Column:** [Onyx Monolithic C18 Column 100 x 4.6 mm](#)

**Part No:** [CH0-7643](#)

**Dimensions:** 100 x 4.6 mm ID

**Elution Type:** Isocratic

**Elution A:** Water

**Elution B:** Acetonitrile

**Gradient Profile:**

Step No.	Time (min)	Pct A	Pct B
1	0	35	65

**Flow Rate:** 2 mL/min

**Col. Temp:** ambient

**Detection:** UV-Vis Abs.-Variable Wave.(UV) @ 254 nm (22°C)

**Compounds:**

- 1- Uracil
- 2- Acetophenone
- 3- Benzene
- 4- Toluene
- 5- Naphthalene