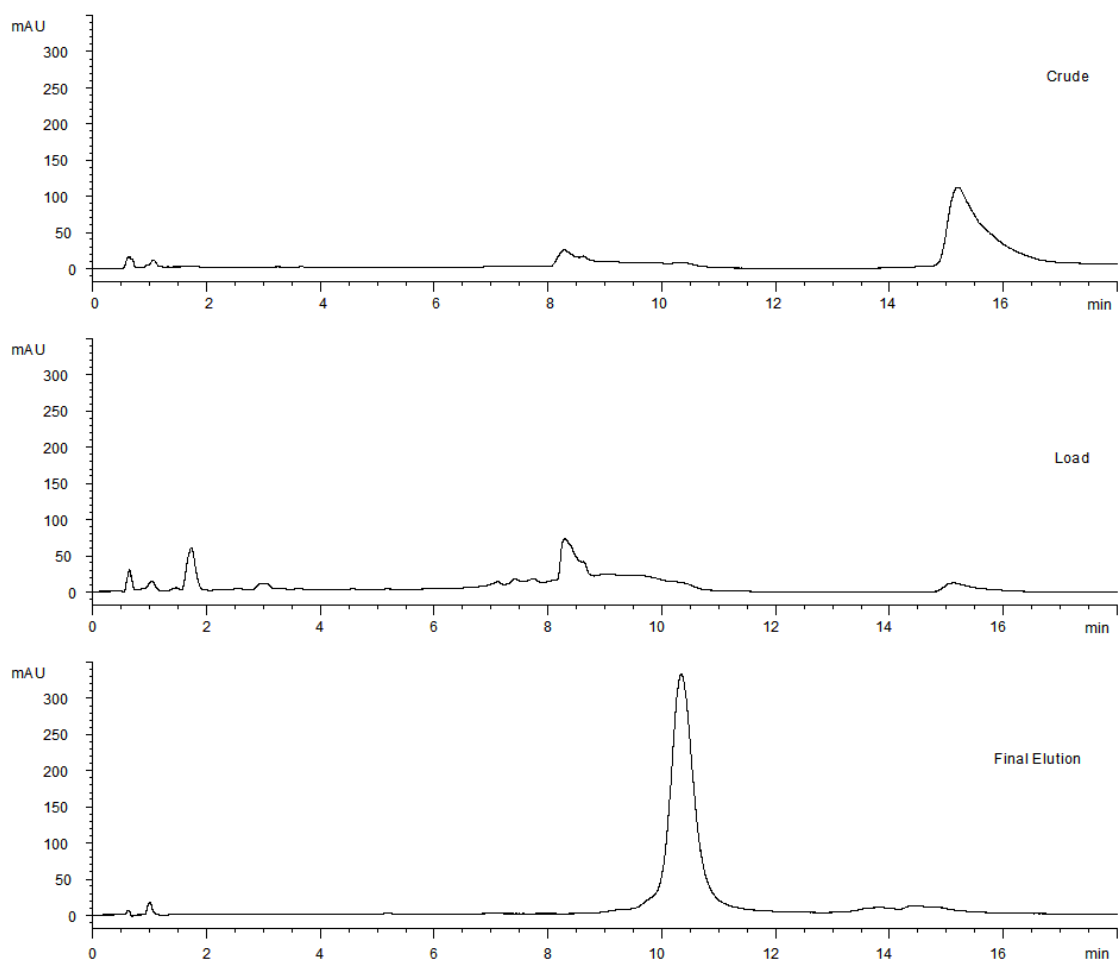


16068



**Column:** [Clarity 3  \$\mu\$ m Oligo-RP LC Column 50 x 4.6 mm](#)

**Part No:** [00B-4441-E0](#)

**Dimensions:** 50 x 4.6 mm ID

**Elution Type:** Gradient

**Elution A:** 50M TEAA/5% Acetonitrile

**Elution B:** Methanol

**Gradient Profile:**

Step No.	Time (min)	Pct A	Pct B
1	0	90	10
2	20	25	75

**Flow Rate:** 1 mL/min

**Col. Temp:** ambient

**Detection:** UV-Vis Abs.-Variable Wave.(UV) @ 260 nm (22°C)

**Compounds:**

1- Phosphorothioate DNA