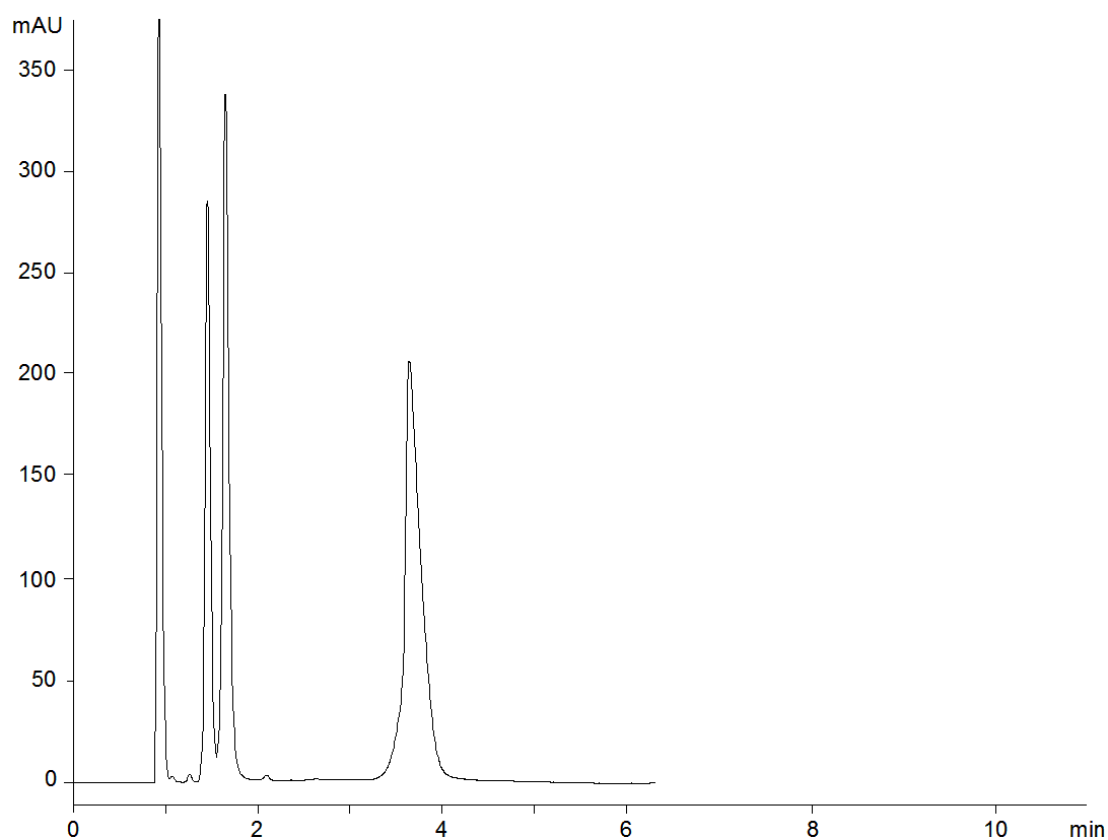


16102



**Column:** [Onyx™ Monolithic C18, LC Column 100 x 3 mm, Ea](#)

**Part No:** [CH0-8158](#)

**Dimensions:** 100 x 3 mm ID

**Elution Type:** Isocratic

**Elution A:** 20mM Potassium phosphate pH 2.5

**Elution B:** Acetonitrile

**Gradient Profile:**

Step No.	Time (min)	Pct A	Pct B
1	0	75	25

**Flow Rate:** 0.6 mL/min

**Col. Temp:** ambient

**Detection:** UV-Vis Abs.-Variable Wave.(UV) @ 210 nm (22°C)

**Compounds:**

- 1- Malic acid
- 2- Chlorpheniramine
- 3- Triprolidine
- 4- Diphenhydramine