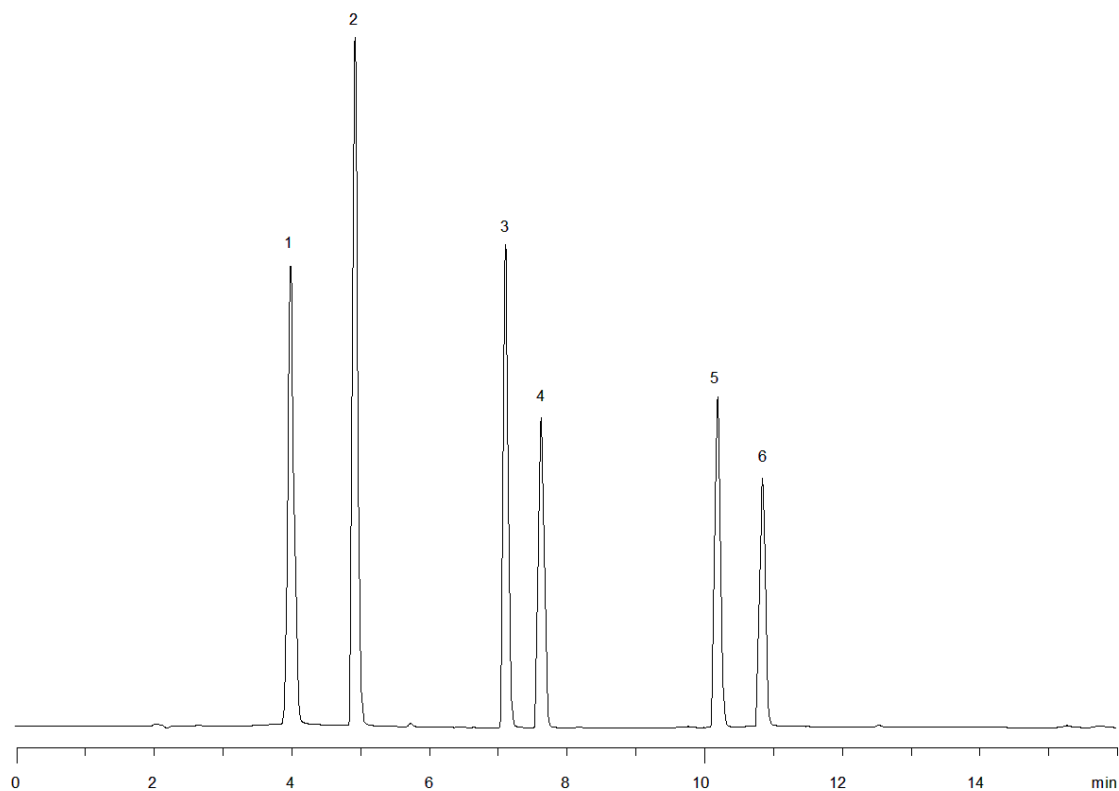


16285



Column: [Luna® 5 µm PFP\(2\) 100 Å LC Column 150 x 4.6 mm](#)

Part No: [00F-4448-E0](#)

Dimensions: 150 x 4.6 mm ID

Elution Type: Gradient

Elution A: 0.1% formic acid in water

Elution B: 0.1% formic acid in acetonitrile

Gradient Profile:

Step No.	Time (min)	Pct A	Pct B
1	0	95	5
2	15	20	80

Flow Rate: 1 mL/min

Col. Temp: ambient

Detection: UV-Vis Abs.-Variable Wave.(UV) @ 254 nm (22°C)

Compounds:

- 1- sulfaguanidine
- 2- Sulfanilamide
- 3- Sulfathiazole
- 4- Sulfamerazine
- 5- Sulfamethoxazole
- 6- Sulfaquinoxaline