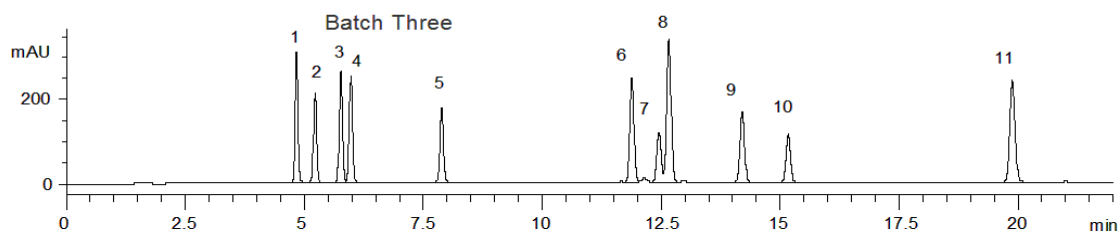
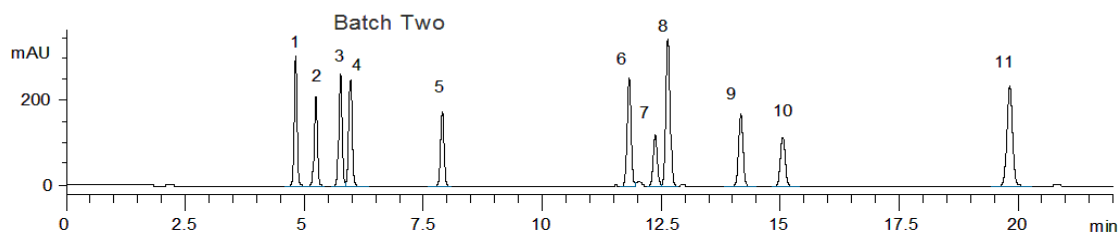
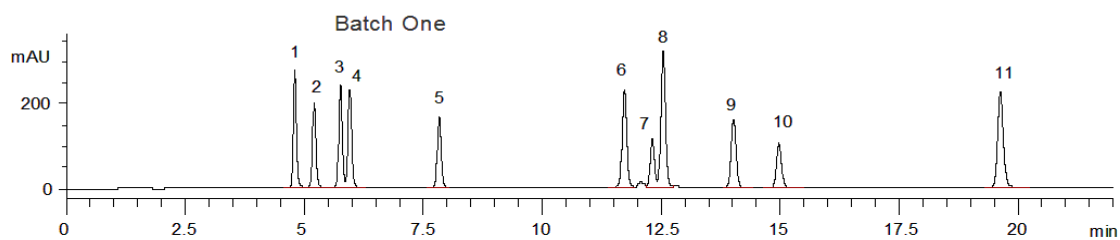


16290



**Column:** [Luna® 3 µm PFP\(2\) 100 Å LC Column 150 x 4.6 mm](#)

**Part No:** [00F-4447-E0](#)

**Dimensions:** 150 x 4.6 mm ID

**Elution Type:** Gradient

**Elution A:** Water

**Elution B:** Acetonitrile

**Gradient Profile:**

Step No.	Time (min)	Pct A	Pct B
1	0	70	30
2	25	35	65

**Flow Rate:** 1 mL/min

**Col. Temp:** ambient

**Detection:** UV-Vis Abs.-Variable Wave.(UV) @ 220 nm (22°C)

**Compounds:**

- 1- Estriol
- 2- Hydrocortisone
- 3- Prednisone
- 4- Cortisone
- 5- Corticosterone
- 6- Estradiol
- 7- Cortisone acetate
- 8- 21-Hydroxyprogesterone
- 9- 17-Hydroxyprogesterone
- 10- Estrone
- 11- Progesterone