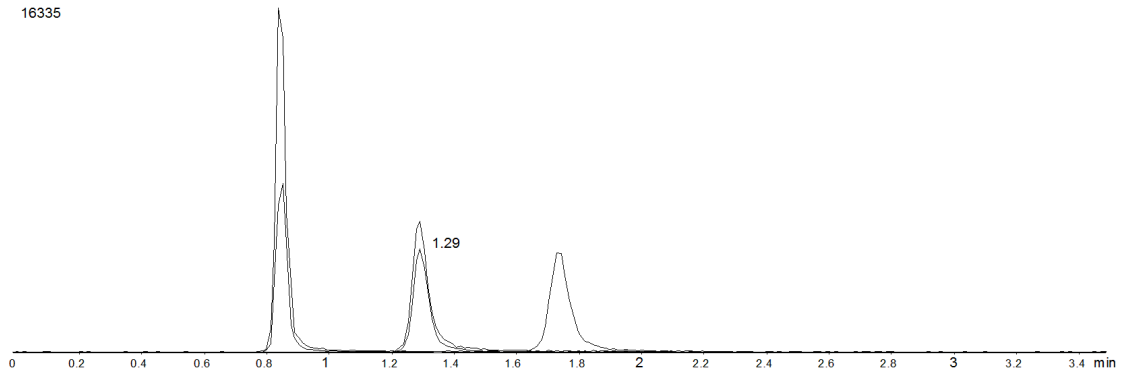


16335



**Column:** [Luna® 5 µm HILIC 200 Å LC Column 100 x 2 mm](#)

**Part No:** [00D-4450-B0](#)

**Dimensions:** 100 x 2 mm ID

**Elution Type:** Isocratic

**Elution A:** 90/10 Acetonitrile/100mM Ammonium Formate pH 3.2

**Gradient Profile:**

Step No.	Time (min)	Pct A
1	0	100

**Flow Rate:** 0.4 mL/min

**Col. Temp:** ambient

**Detection:** Mass Spectrometer (MS) @ amu (22°C)

**Compounds:**

- 1- Cotinine
- 2- Nicotine
- 3- Nornicotine