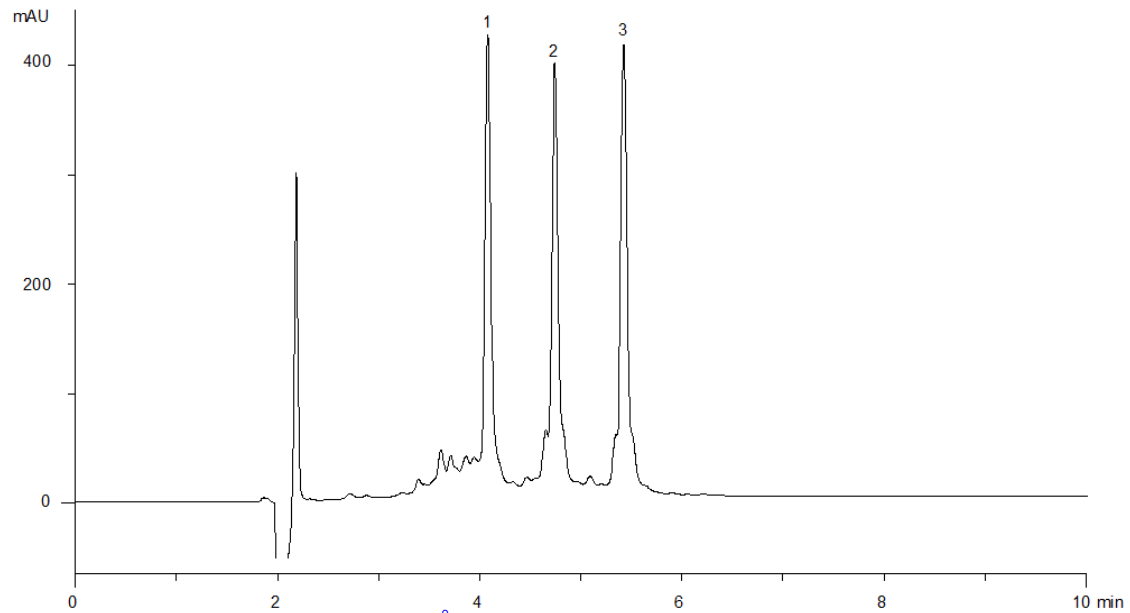


16451



Column: [Jupiter® 3 µm C18 300 Å, LC Column 150 x 4.6 mm, Ea](#)

Part No: [00F-4263-E0](#)

Dimensions: 150 x 4.6 mm ID

Elution Type: Gradient

Elution A: 0.1% TFA and 5% Acetonitrile in Water

Elution B: 0.1% TFA in Acetonitrile

Gradient Profile:

Step No.	Time (min)	Pct A	Pct B
1	0	75	25
2	15	45	55

Flow Rate: 1 mL/min

Col. Temp: 40 °C

Detection: UV-Vis Abs.-Diode Array (PDA) @ 214 nm (40°C)

Compounds:

1- Cyt C Horse Heart

2- Cyt C Bovine Heart

3- Cyt C Saccharomyces Cerevisiae