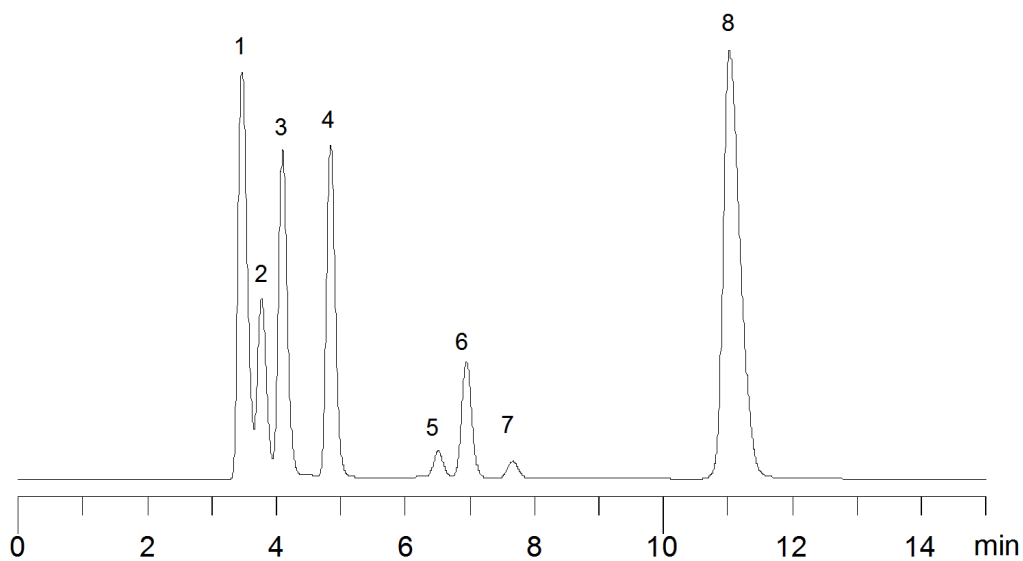


16648



**Column:** [Rezex™ 8 µm ROA-Organic Acid H+ \(8%\) LC Column 150 x 7.8 mm](#)

**Part No:** [00F-0138-K0](#)

**Dimensions:** 150 x 7.8 mm ID

**Elution Type:** Isocratic

**Elution A:** 0.005N Sulfuric Acid

**Gradient Profile:**

Step No.	Time (min)	Pct A
1	0	100

**Flow Rate:** 0.6 mL/min

**Col. Temp:** 60 °C

**Detection:** Refractive Index (RI) @ (40°C)

**Compounds:**

- 1- Dp4+
- 2- Dp3
- 3- Maltose
- 4- Glucose
- 5- Lactic acid
- 6- Glycerol
- 7- Acetic Acid
- 8- Ethanol