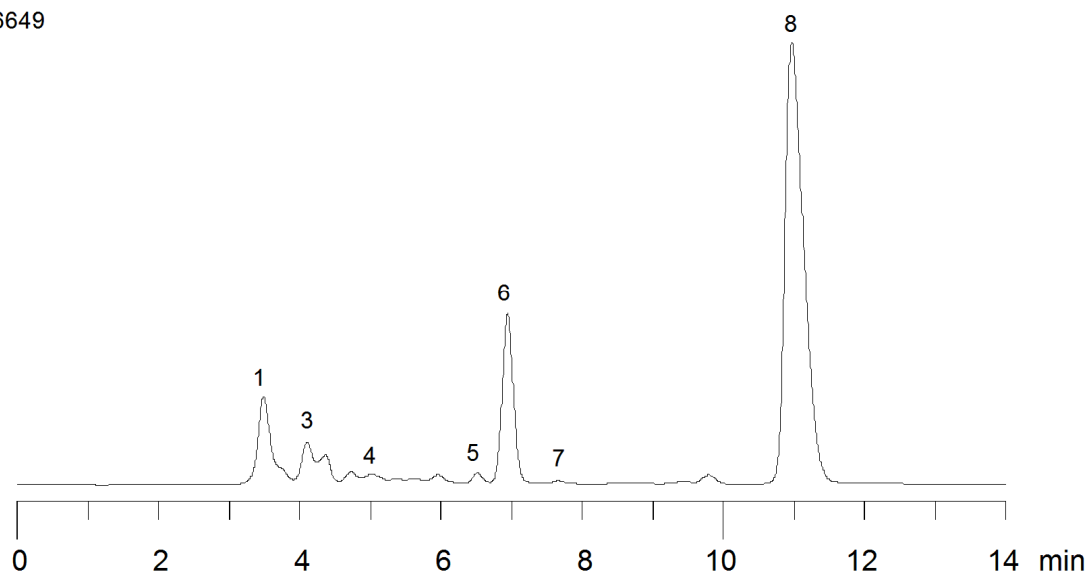


16649



Column: [Rezex™ 8 μm ROA-Organic Acid H+ \(8%\) LC Column 150 x 7.8 mm](#)

Part No: [00F-0138-K0](#)

Dimensions: 150 x 7.8 mm ID

Elution Type: Isocratic

Elution A: 0.005N Sulfuric Acid

Gradient Profile:

Step No.	Time (min)	Pct A
1	0	100

Flow Rate: 0.6 mL/min

Col. Temp: 60 °C

Detection: Refractive Index (RI) @ (40°C)

Compounds:

- 1- Dp4+
- 2- Maltose
- 3- Glucose
- 4- Lactic Acid
- 5- Glycerol
- 6- Acetic Acid
- 7- Ethanol