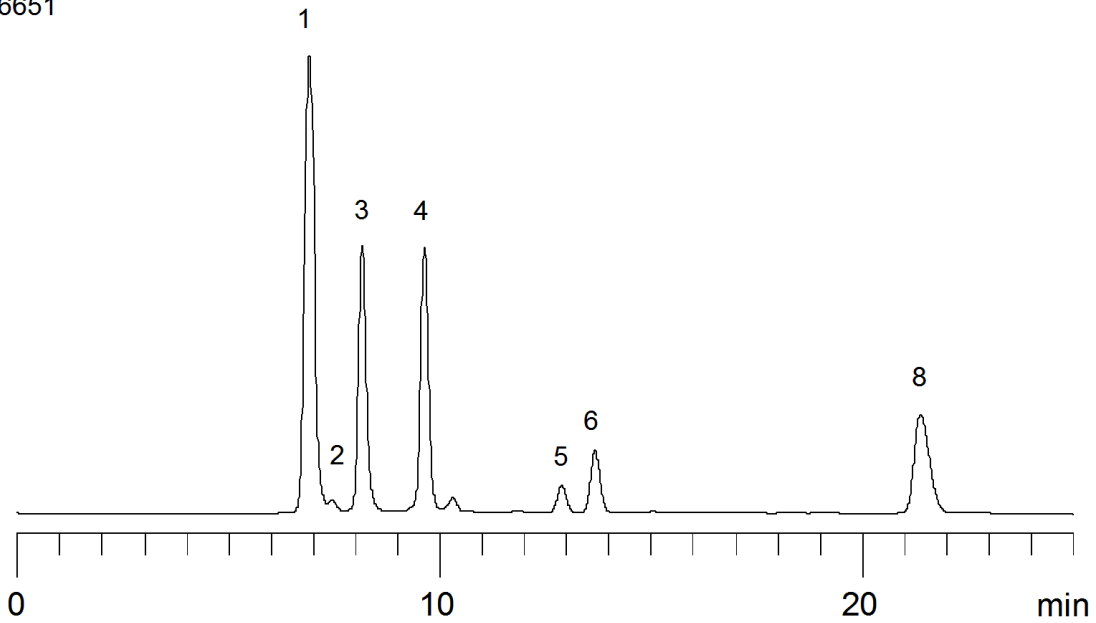


16651



Column: [Rezex™ 8 µm ROA-Organic Acid H+ \(8%\) LC Column 300 x 7.8 mm](#)

Part No: [00H-0138-K0](#)

Dimensions: 300 x 7.8 mm ID

Elution Type: Isocratic

Elution A: 0.005N Sulfuric Acid

Gradient Profile:

Step No.	Time (min)	Pct A
1	0	100

Flow Rate: 0.6 mL/min

Col. Temp: 60 °C

Detection: Refractive Index (RI) @ (40°C)

Compounds:

- 1- Dp4+
- 2- Dp3
- 3- Maltose
- 4- Glucose
- 5- Lactic Acid
- 6- Glycerol
- 7- Acetic Acid
- 8- Ethanol