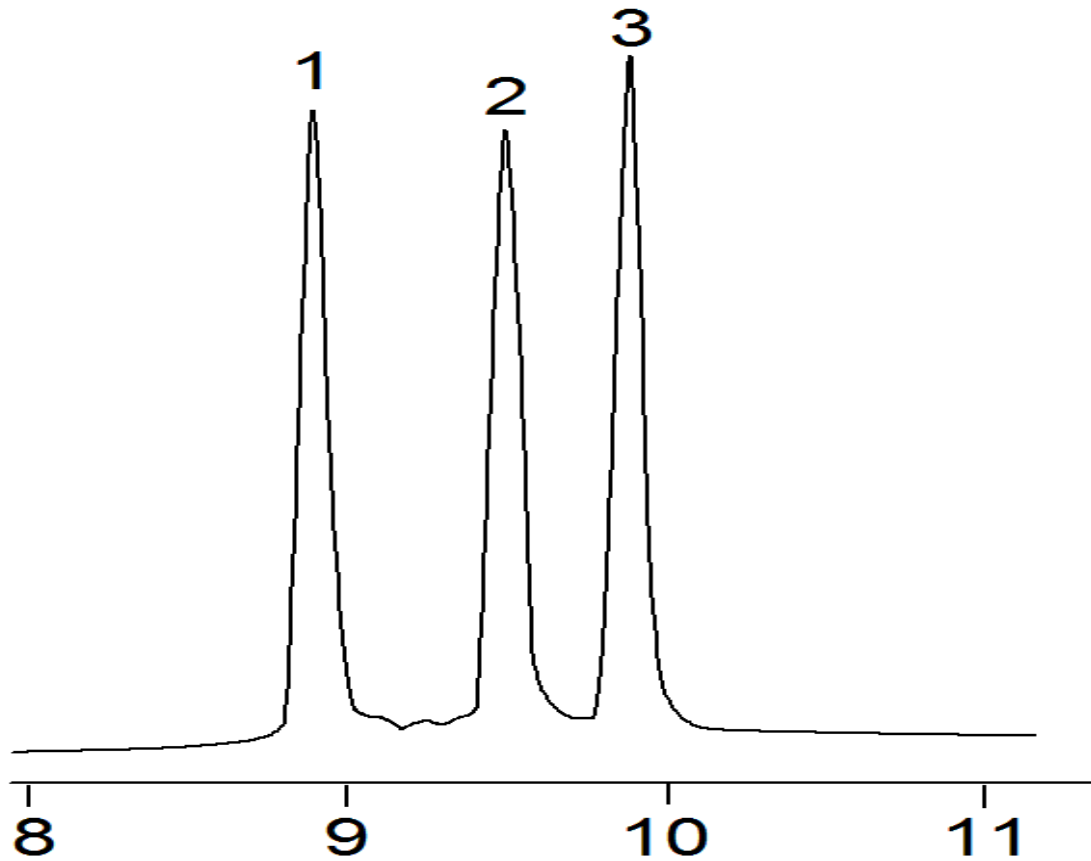


16659



Column: [Jupiter® 5 µm C18 300 Å, LC Column 250 x 4.6 mm, Ea](#)

Part No: [00G-4053-E0](#)

Dimensions: 250 x 4.6 mm ID

Elution Type: Gradient

Elution A: 0.1% TFA in Water

Elution B: 0.1% TFA in Acetonitrile

Gradient Profile:

Step No.	Time (min)	Pct A	Pct B
1	0	75	25
2	15	45	55

Flow Rate: 1 mL/min

Col. Temp: ambient

Detection: UV-Vis Abs.-Variable Wave.(UV) @ 220 nm (22°C)

Compounds:

- 1- Equine Cytochrome c
- 2- Bovine Cytochrome c
- 3- Canine Cytochrome c