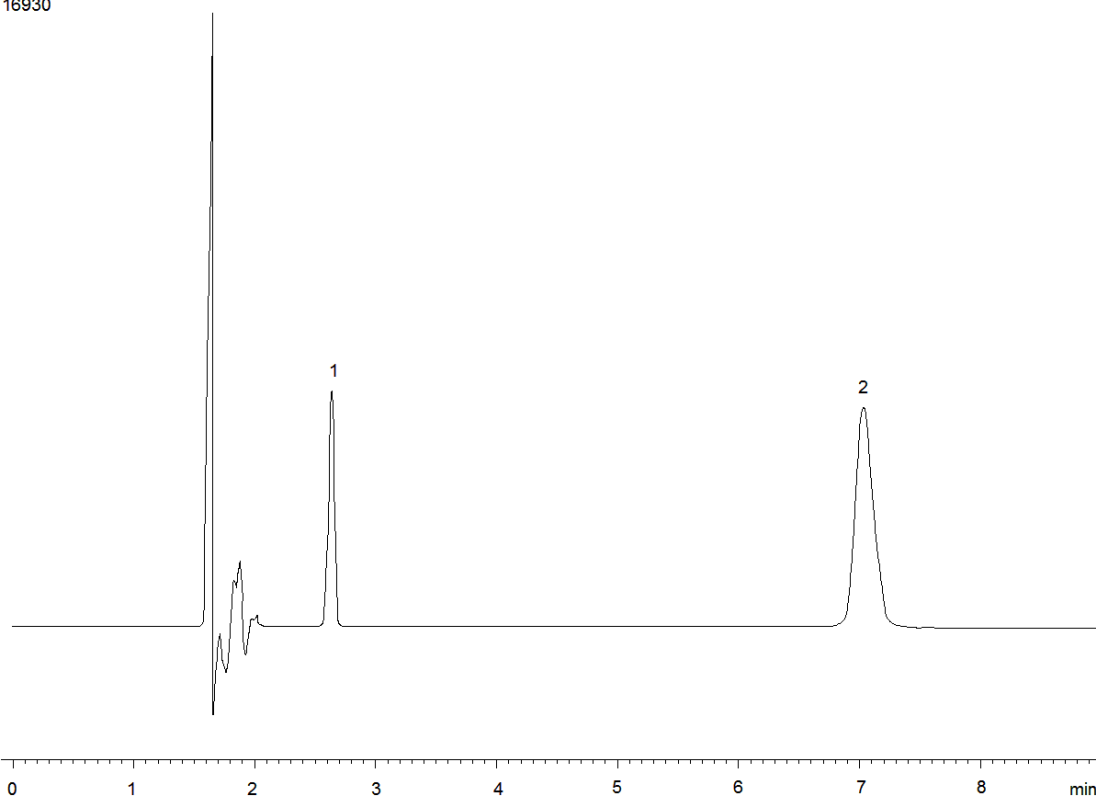


16930



**Column:** [Luna® 5 µm CN 100 Å LC Column 250 x 4.6 mm](#)

**Part No:** [00G-4255-E0](#)

**Dimensions:** 250 x 4.6 mm ID

**Elution Type:** Isocratic

**Elution A:** Methanol

**Elution B:** Acetonitrile

**Elution C:** Water w/10mM heptane sulfonate and 13mM Triethylamine, pH 3.3

**Gradient Profile:**

Step No.	Time (min)	Pct A	Pct B	Pct C
1	0	10	26	64

**Flow Rate:** 2 mL/min

**Col. Temp:** ambient

**Detection:** UV-Vis Abs.-Variable Wave.(UV) @ 254 nm (22°C)

**Compounds:**

1- Pseudoephedrine

2- Diphenhydramine