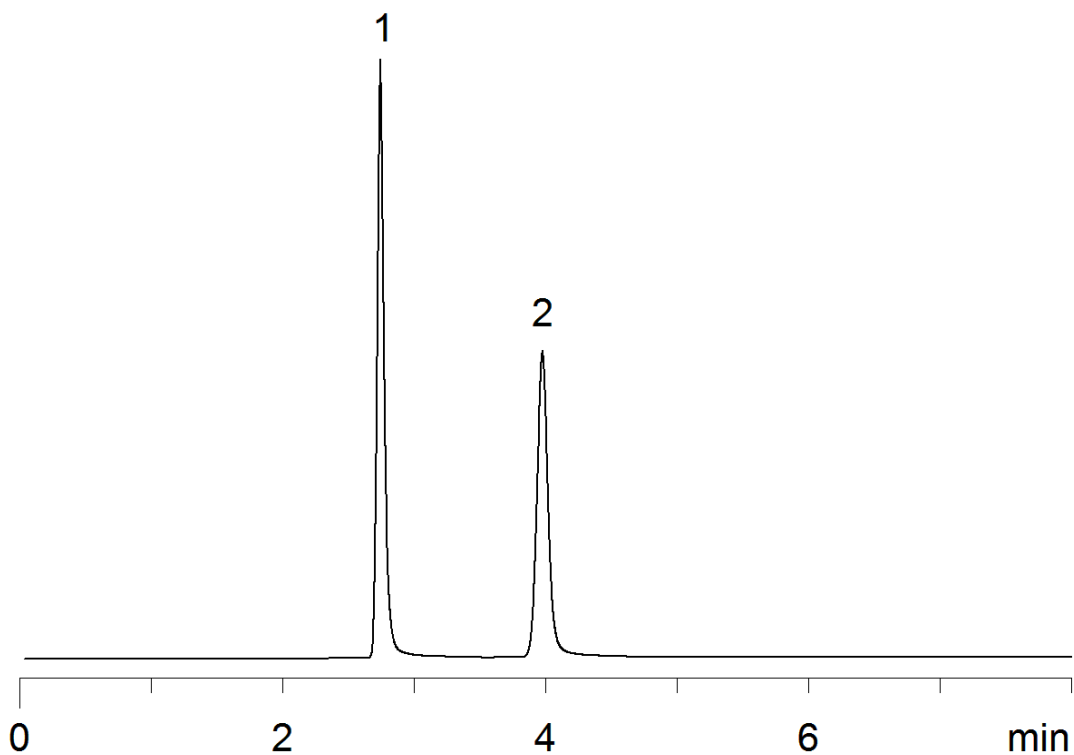


16951



Column: [Luna® 5 µm C18\(2\) 100 Å LC Column 250 x 4.6 mm](#)

Part No: [00G-4252-E0](#)

Dimensions: 250 x 4.6 mm ID

Elution Type: Isocratic

Elution A: Water

Elution B: Methanol

Elution C: Triethylamine

Gradient Profile:

Step No.	Time (min)	Pct A	Pct B	Pct C
1	0	70	29	1

Flow Rate: 1 mL/min

Col. Temp: ambient

Detection: UV-Vis Abs.-Variable Wave.(UV) @ 280 nm (22°C)

Compounds:

1- p-Aminobenzoic acid

2- Procainamide