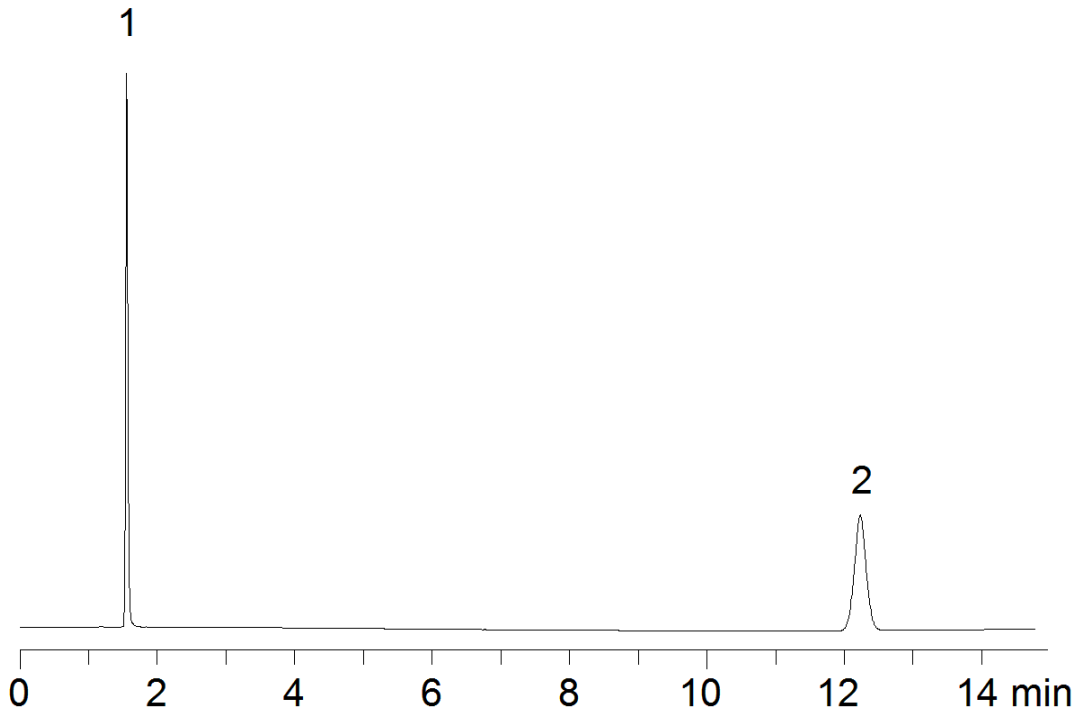


17095



Column: [Luna® 3 µm C8\(2\) 100 Å LC Column 150 x 4.6 mm](#)

Part No: [00F-4248-E0](#)

Dimensions: 150 x 4.6 mm ID

Elution Type: Isocratic

Elution A: Potassium Phosphate pH 2.7

Elution B: Acetonitrile

Gradient Profile:

| Step No. | Time (min) | Pct A | Pct B |
|----------|------------|-------|-------|
| 1 | 0 | 50 | 50 |

Flow Rate: 1.2 mL/min

Col. Temp: ambient

Detection: UV-Vis Abs.-Variable Wave.(UV) @ 254 nm (22°C)

Compounds:

- 1- Promethazine Sulfoxide
- 2- Phenothiazine