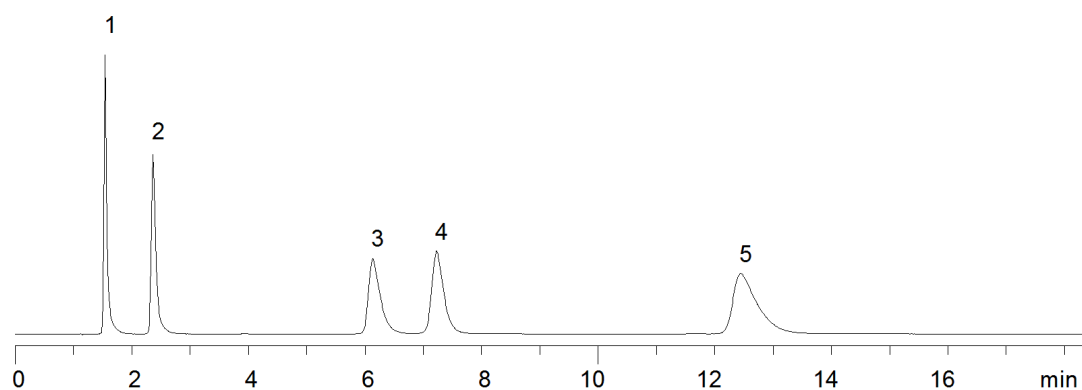


17177



Column: [Luna® 5 µm SCX 100 Å LC Column 150 x 4.6 mm](#)

Part No: [00F-4398-E0](#)

Dimensions: 150 x 4.6 mm ID

Elution Type: Isocratic

Elution A: 50mM Potassium Phosphate pH 2.5

Gradient Profile:

Step No.	Time (min)	Pct A
1	0	100

Flow Rate: 1.5 mL/min

Col. Temp: ambient

Detection: UV-Vis Abs.-Variable Wave.(UV) @ 210 nm (22°C)

Compounds:

- 1- d-Uridine
- 2- d-Inosine
- 3- d-Guanosine
- 4- d-Cytidine
- 5- d-Adenosine