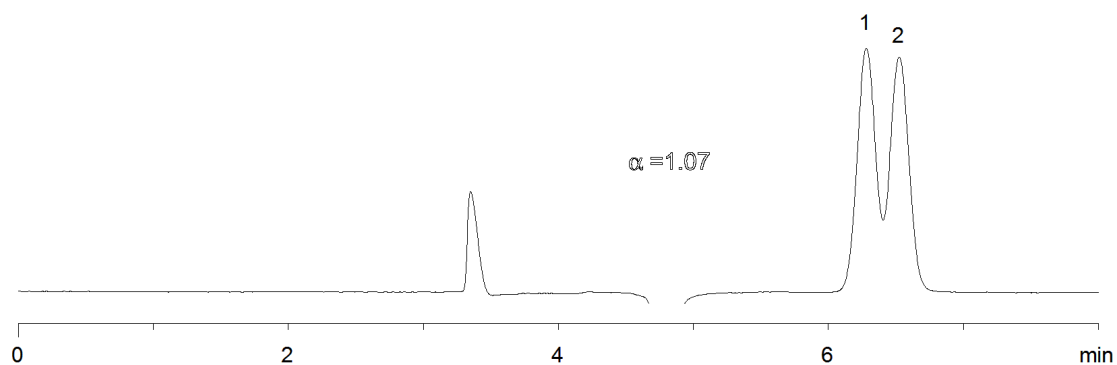


17494



**Column:** [Lux® 5u Cellulose-2, LC Column 250 x 4.6 mm, Ea](#)

**Part No:** [00G-4457-E0](#)

**Dimensions:** 250 x 4.6 mm ID

**Elution Type:** Isocratic

**Elution A:** 0.1 % DEA in CH<sub>3</sub>CN

**Gradient Profile:**

Step No.	Time (min)	Pct A
1	20	100

**Flow Rate:** 1 mL/min

**Col. Temp:** ambient

**Detection:** UV-Vis Abs.-Variable Wave.(UV) @ 220 nm (22°C)

**Compounds:**

1- Flecainide

2- Flecainide