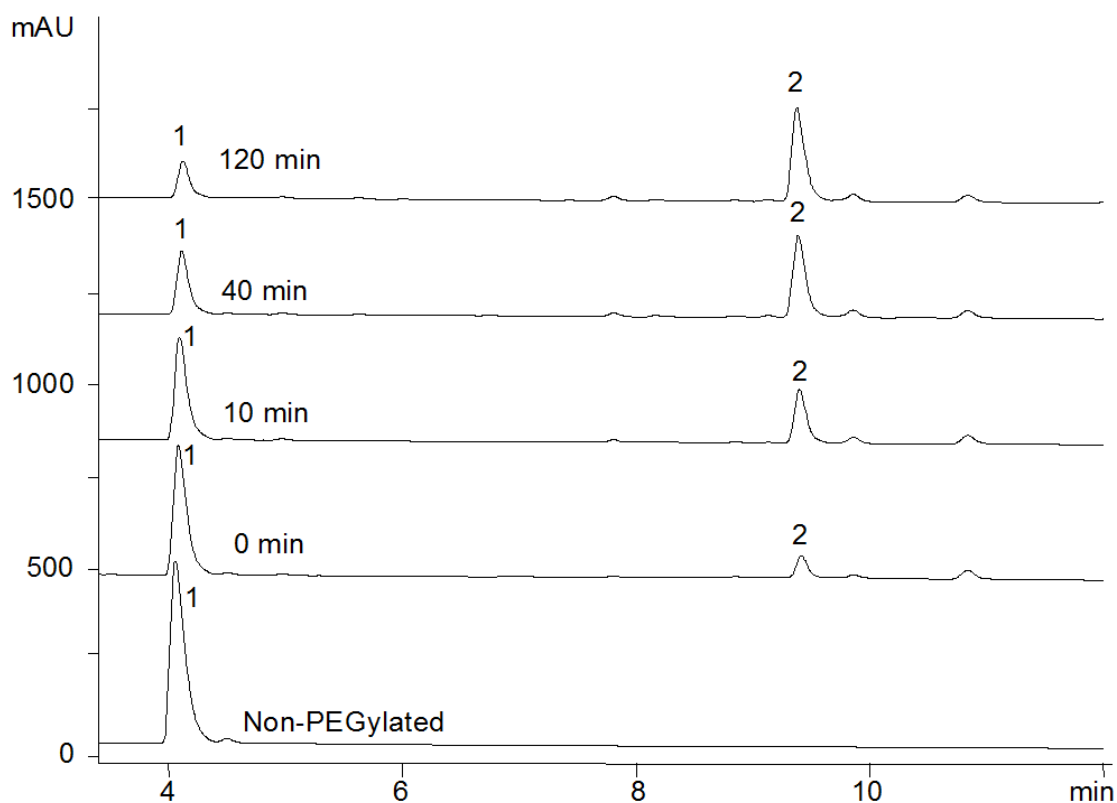


17516



**Column:** [Jupiter® 5 µm C4 300 Å, LC Column 150 x 4.6 mm, Ea](#)

**Part No:** [00F-4167-E0](#)

**Dimensions:** 150 x 4.6 mm ID

**Elution Type:** Gradient

**Elution A:** 0.1% TFA 2% ACN in Water

**Elution B:** 70/20% ACN/IPA 0.08% TFA in Water

**Gradient Profile:**

| Step No. | Time (min) | Pct A | Pct B |
|----------|------------|-------|-------|
| 1        | 0          | 85    | 15    |
| 2        | 25         | 30    | 70    |

**Flow Rate:** 1 mL/min

**Col. Temp:** 45 °C

**Detection:** UV-Vis Abs.-Variable Wave.(UV) @ 214 nm (25°C)

**Compounds:**

1- PEGylated peptide Substance P