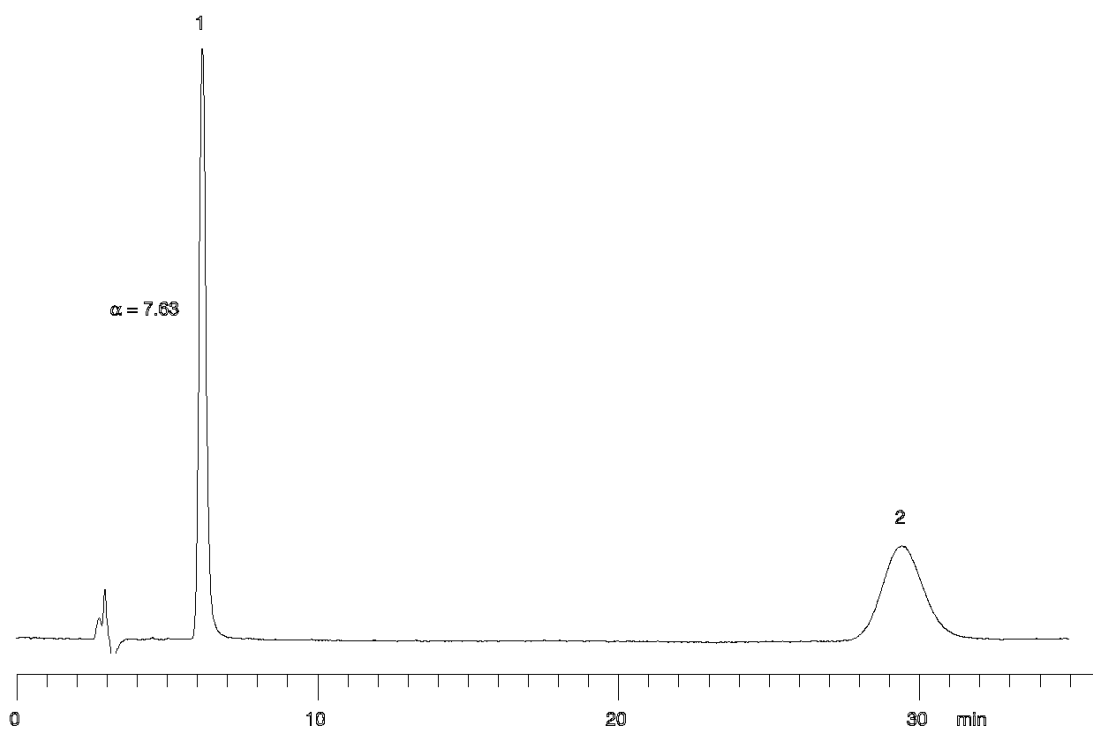


17853



**Column:** [Lux 5  \$\mu\$ m Cellulose-2 LC Column 250 x 4.6 mm](#)

**Part No:** 00G-4457-E0

**Dimensions:** 250 x 4.6 mm ID

**Elution Type:** Isocratic

**Elution A:** 0.1 % DEA in Hexane

**Elution B:** 0.1% DEA in IPA

**Gradient Profile:**

| Step No. | Time (min) | Pct A | Pct B |
|----------|------------|-------|-------|
| 1        | 10         | 60    | 40    |

**Flow Rate:** 1 mL/min

**Col. Temp:** ambient

**Detection:** UV-Vis Abs.-Variable Wave.(UV) @ 220 nm (22°C)

**Compounds:**

1- Ambucetamide

2- Ambucetamide