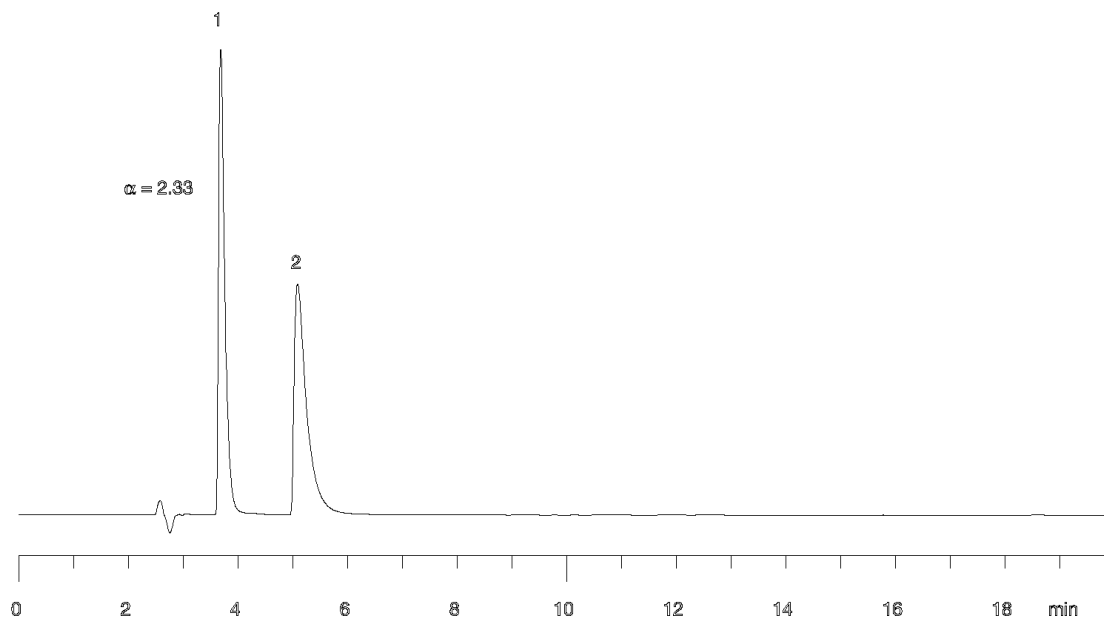


17862



Column: [Lux 5u Cellulose-1, LC Column 250 x 4.6 mm, Ea](#)

Part No: [00G-4459-E0](#)

Dimensions: 250 x 4.6 mm ID

Elution Type: Isocratic

Elution A: 20mM Ammonium acetate +0.1%DEA

Elution B: Acetonitrile

Gradient Profile:

Step No.	Time (min)	Pct A	Pct B
1	10	40	60

Flow Rate: 1 mL/min

Col. Temp: ambient

Detection: UV-Vis Abs.-Variable Wave.(UV) @ 220 nm (22°C)

Compounds:

- 1- Pindolol
- 2- Pindolol