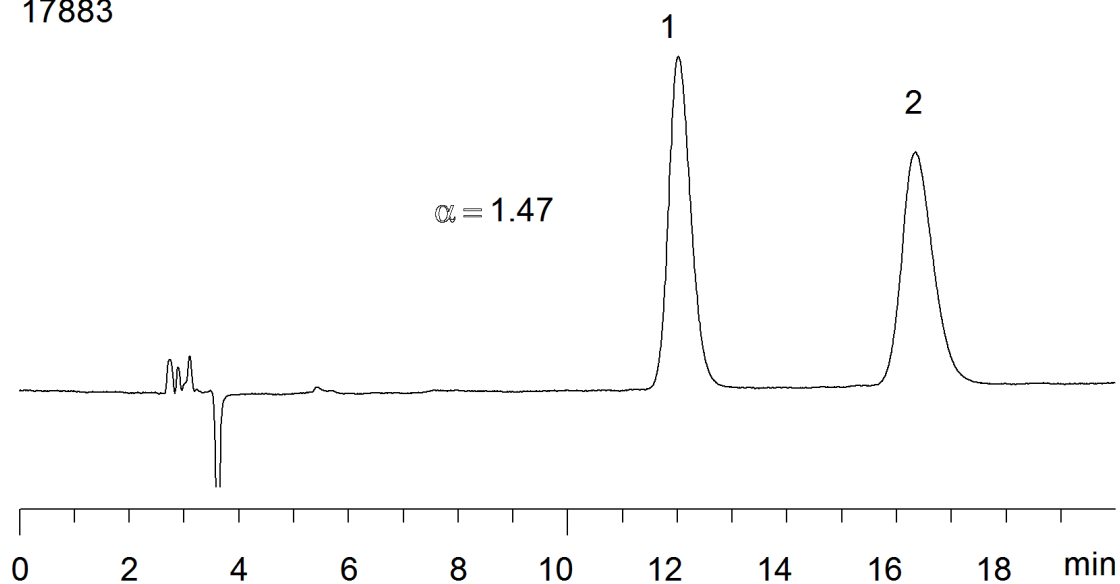


17883



Column: [Lux 5 \$\mu\$ m Cellulose-2 LC Column 250 x 4.6 mm](#)

Part No: [00G-4457-E0](#)

Dimensions: 250 x 4.6 mm ID

Elution Type: Isocratic

Elution A: 0.1% DEA in Heptane

Elution B: 0.1% DEA in IPA

Gradient Profile:

Step No.	Time (min)	Pct A	Pct B
1	10	80	20

Flow Rate: 1 mL/min

Col. Temp: ambient

Detection: UV-Vis Abs.-Variable Wave.(UV) @ 220 nm (22°C)

Compounds:

1- Ornidazole

2- Ornidazole