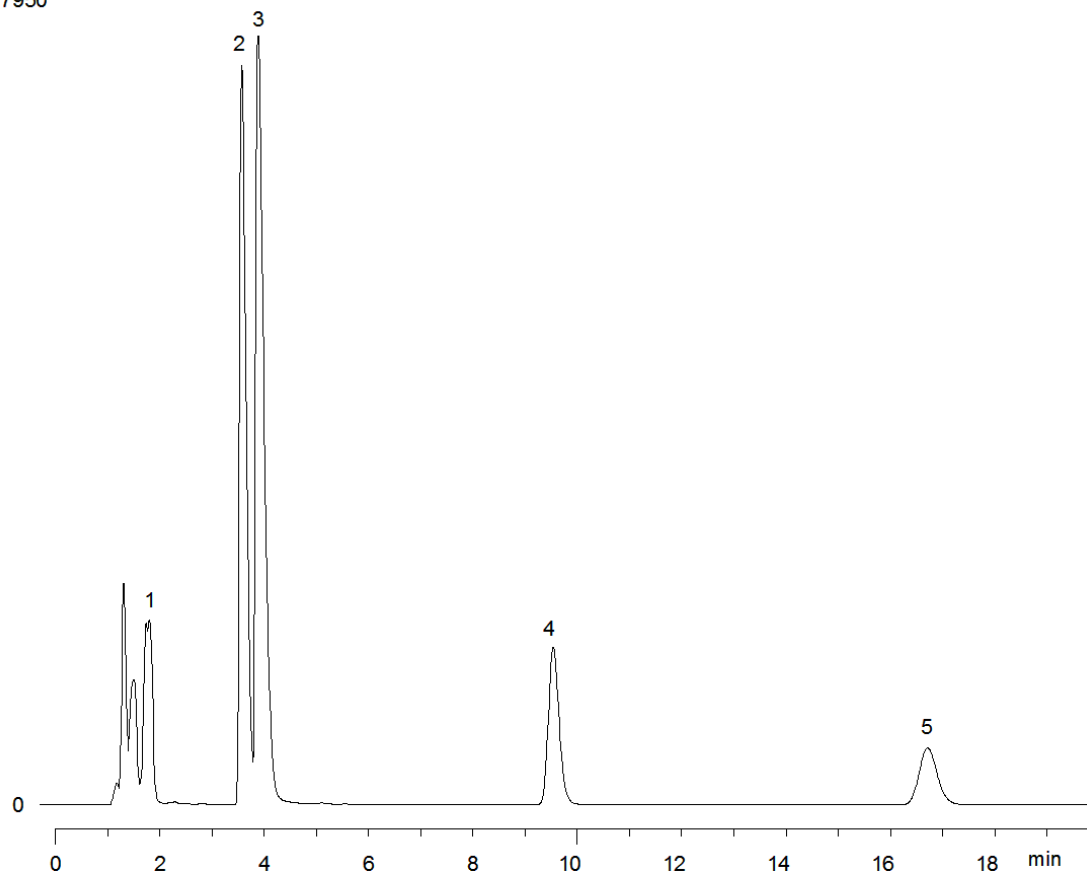


17950



**Column:** [Luna® 5 µm C18\(2\) 100 Å LC Column 150 x 4.6 mm](#)

**Part No:** [00F-4252-E0](#)

**Dimensions:** 150 x 4.6 mm ID

**Elution Type:** Gradient

**Elution A:** Phosphate Buffer, pH 2.5

**Elution B:** Acetonitrile

**Elution C:** 0

**Elution D:** 0

**Gradient Profile:**

Step No.	Time (min)	Pct A	Pct B	Pct C	Pct D
1	20	60	40	0	0

**Flow Rate:** 1 mL/min

**Col. Temp:** ambient

**Detection:** UV-Vis Abs.-Diode Array (PDA) @ 210 nm (22°C)

**Compounds:**

- 1- Ranitidine
- 2- Clonidine
- 3- Nortryptiline
- 4- Amytryptiline
- 5- Propyl Paraben
- 6- Butyl Paraben