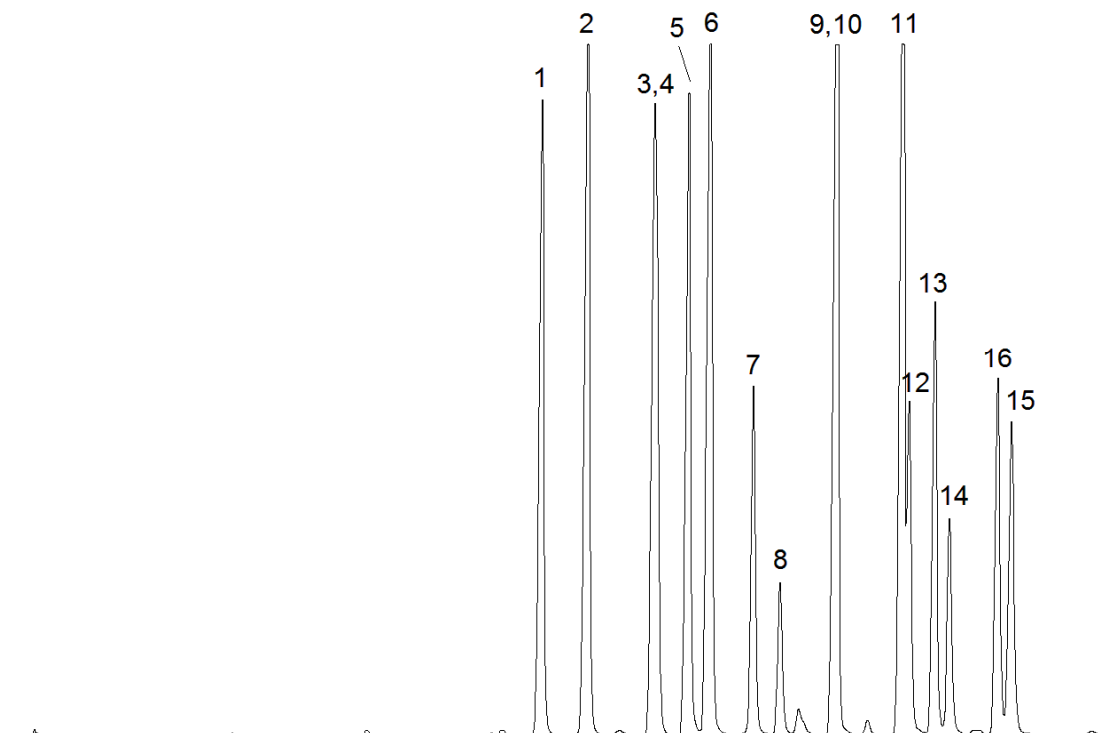


17975



Column: [Ultremex™ 5 μm C18 80 Å, LC Column 250 x 4.6 mm, Ea](#)

Part No: [00G-0048-E0](#)

Dimensions: 250 x 4.6 mm ID

Elution Type: Gradient

Elution A: Acetonitrile

Elution B: Water

Gradient Profile:

Step No.	Time (min)	Pct A	Pct B
1	0	50	50
2	14	100	0

Flow Rate: 1.5 mL/min

Col. Temp: 30 °C

Detection: UV-Vis Abs.-Variable Wave.(UV) @ 254 nm (30°C)

Compounds:

- 1- Naphthalene
- 2- Acetnaphthylene
- 3- Acenaphthene
- 4- Fluorene
- 5- Phenanthrene
- 6- Anthracene
- 7- Fluoranthrene
- 8- Pyrene
- 9- Benz[a]anthracene
- 10- Chrysene
- 11- Benzo[b]fluoranthene
- 12- Benzo[k]fluoranthene
- 13- Benzo[a]pyrene
- 14- Dibenzo[a,h]anthracene
- 15- Benzo[g,h,i]perylene
- 16- Indeno[1,2,3-cd]pyrene