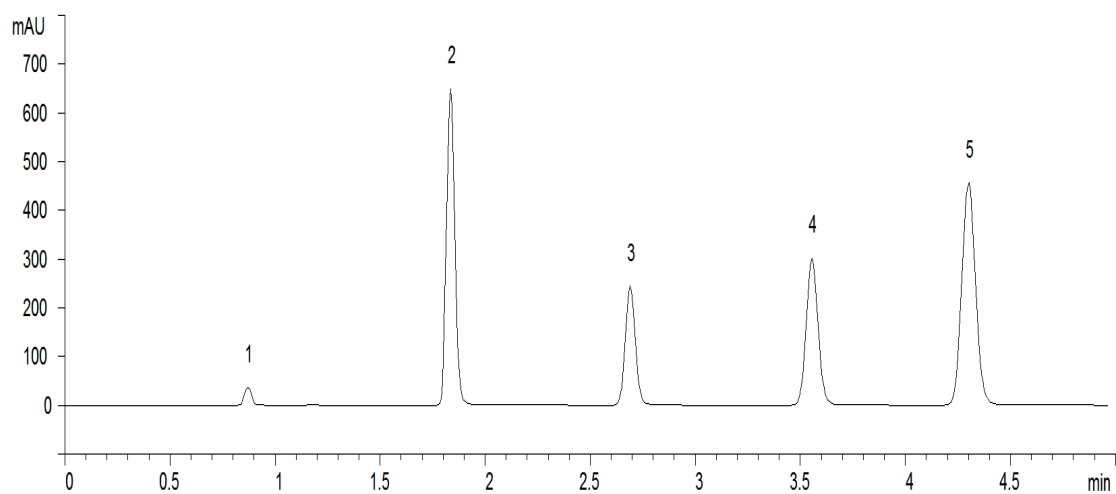


18001



**Column:** [Luna® 3 µm C18\(2\) 100 Å LC Column 150 x 4.6 mm](#)

**Part No:** [00F-4251-E0](#)

**Dimensions:** 150 x 4.6 mm ID

**Elution Type:** Isocratic

**Elution A:** Water

**Elution B:** Acetonitrile

**Gradient Profile:**

Step No.	Time (min)	Pct A	Pct B
1	0	35	65

**Flow Rate:** 1.5 mL/min

**Col. Temp:** ambient

**Detection:** UV-Vis Abs.-Variable Wave.(UV) @ nm (22°C)

**Compounds:**

- 1- Uracil
- 2- Acetophenone
- 3- Benzene
- 4- Toluene
- 5- Naphthalene