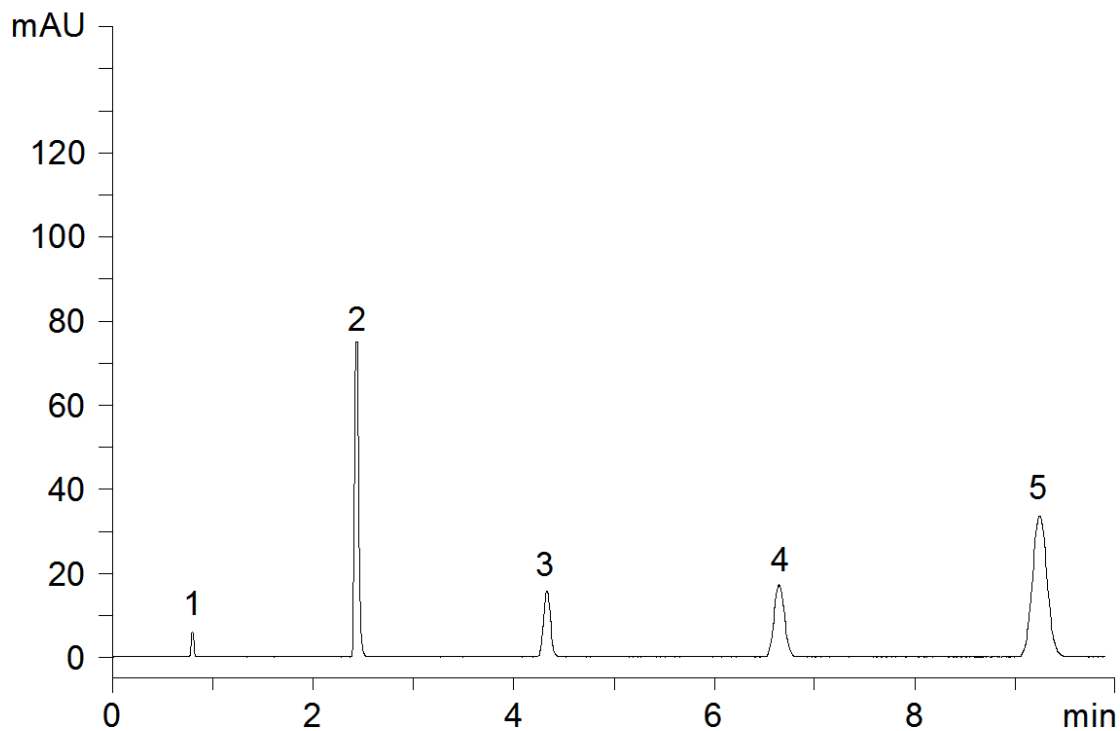


18172



**Column:** [Luna® 3 µm C18\(2\) 100 Å LC Column 150 x 4.6 mm](#)

**Part No:** 00F-4251-E0

**Dimensions:** 150 x 4.6 mm ID

**Elution Type:** Isocratic

**Elution A:** water

**Elution B:** acetonitrile

**Gradient Profile:**

Step No.	Time (min)	Pct A	Pct B
1	0	50	50

**Flow Rate:** 1.7 mL/min

**Col. Temp:** 25 °C

**Detection:** UV-Vis Abs.-Variable Wave.(UV) @ 254 nm (22°C)

**Compounds:**

- 1- Uracil
- 2- Acetophenone
- 3- Benzene
- 4- Toluene
- 5- Naphthalene