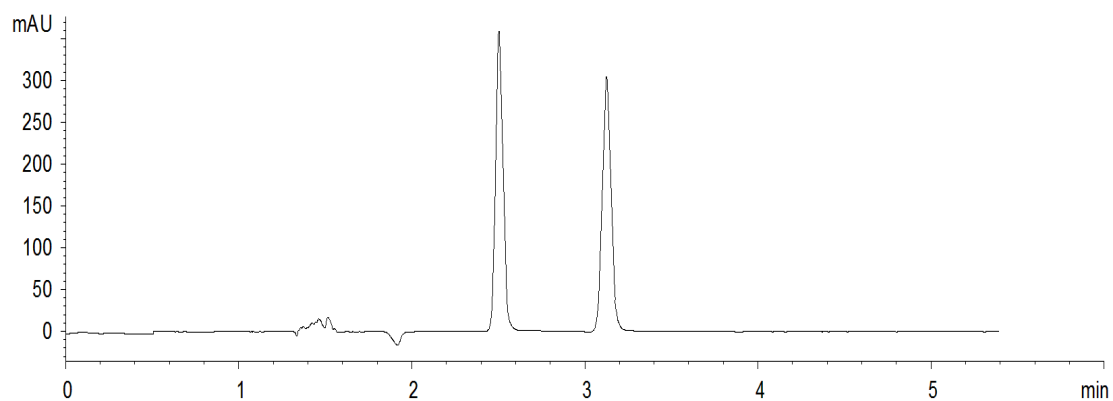


18204



Column: [Lux 5 \$\mu\$ m Cellulose-2 LC Column 250 x 4.6 mm](#)

Part No: [00G-4457-E0](#)

Dimensions: 250 x 4.6 mm ID

Elution Type: Isocratic

Elution A: 0.1% DEA+0.1% TFA in methanol

Elution B: CO₂

Gradient Profile:

Step No.	Time (min)	Pct A	Pct B
1	0	25	75

Flow Rate: 2 mL/min

Col. Temp: 40 °C

Detection: UV-Vis Abs.-Variable Wave.(UV) @ 220 nm (22°C)

Compounds:

1- trans-Stilbene oxide