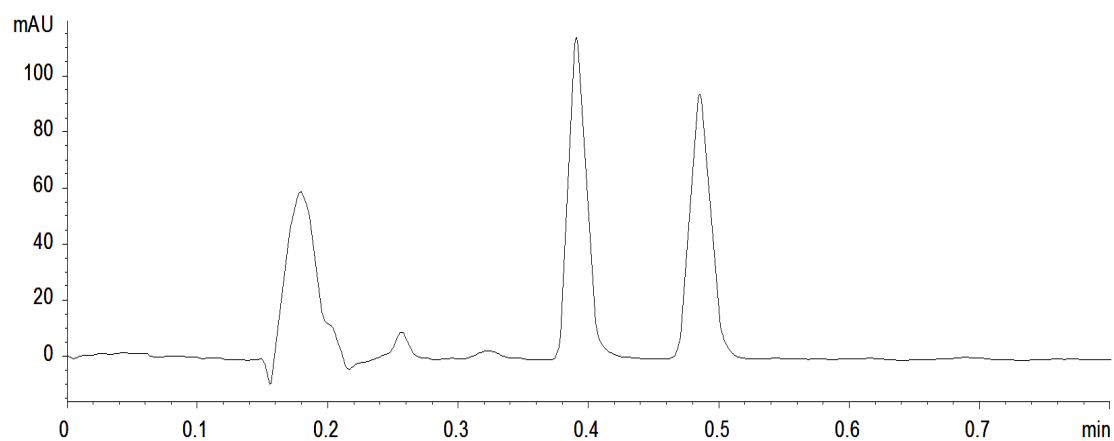


18205



**Column:** [Lux 3  \$\mu\$ m Cellulose-1 LC Column 50 x 4.6 mm](#)

**Part No:** [00B-4458-E0](#)

**Dimensions:** 50 x 4.6 mm ID

**Elution Type:** Isocratic

**Elution A:** 0.1% DEA+0.1% TFA in methanol

**Elution B:** CO<sub>2</sub>

**Gradient Profile:**

Step No.	Time (min)	Pct A	Pct B
1	0	25	75

**Flow Rate:** 4 mL/min

**Col. Temp:** 40 °C

**Detection:** UV-Vis Abs.-Variable Wave.(UV) @ 220 nm (22°C)

**Compounds:**

1- trans-Stilbene oxide